

Tutorial Set 1: Working with ArcGIS

Exercise Site20_1-3 Creating soil sampling map

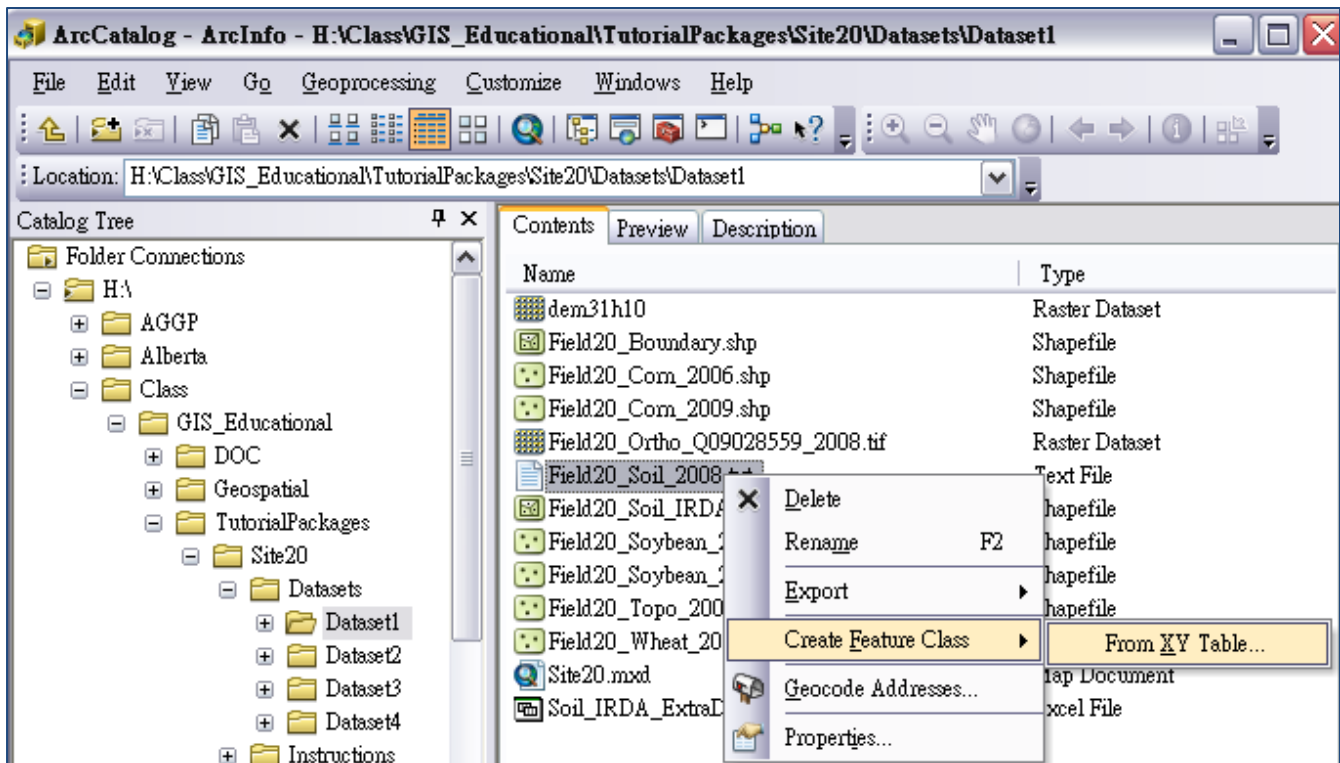
Learning objective: Creating a soil analysis point layer from a text file containing coordinates and soil properties for numerous sampling locations

Techniques: Create Feature Class from the XY Table

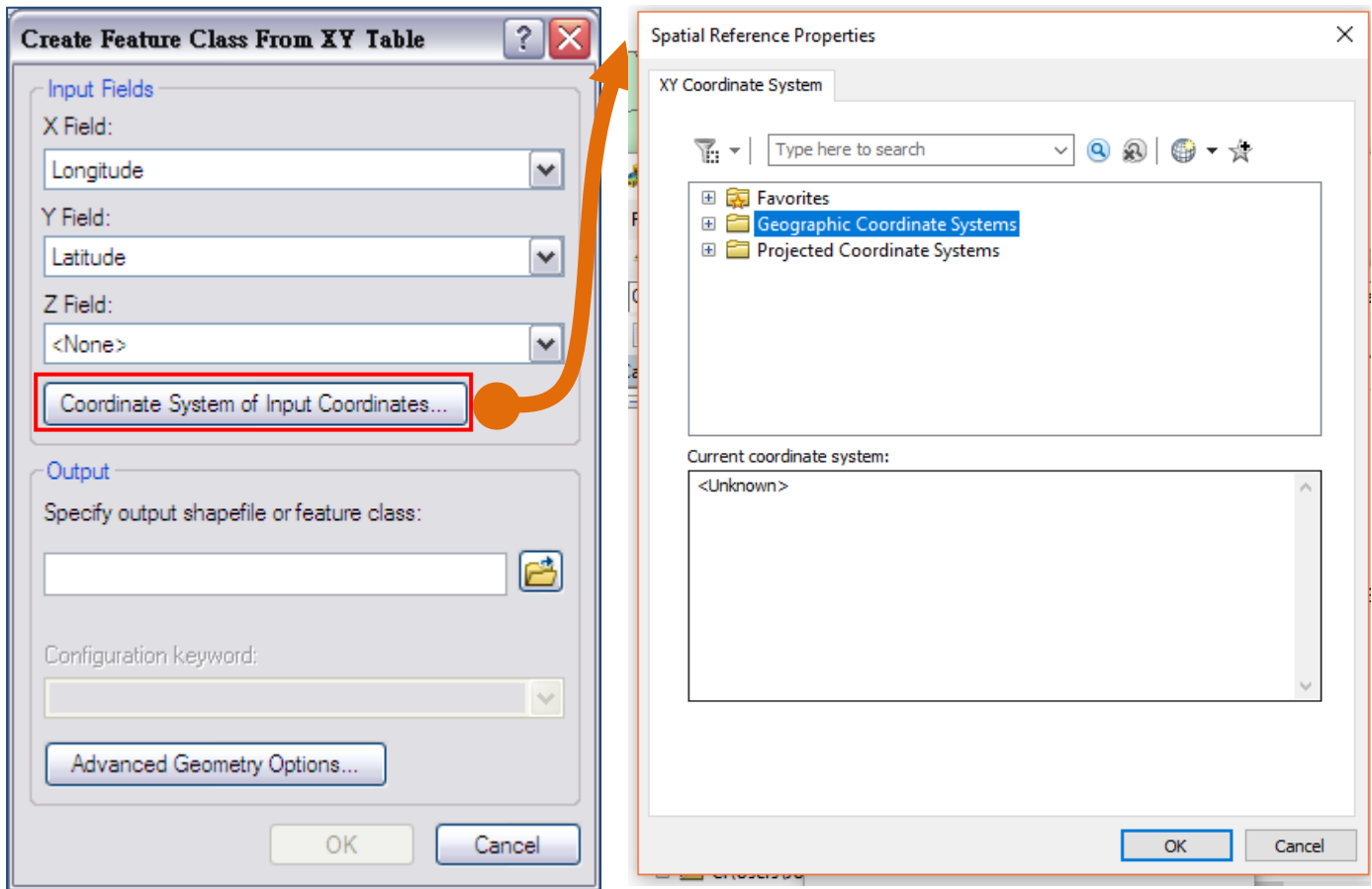
Data Source: Dataset1

Part 1: Creating a point shapefile from a text file

1. In **ArcCatalog**, locate **Field20_Soil_2008.txt** in the folder **Dataset1**
2. Right click on this file, select **Create Feature Class > From XY Table**.



3. In **Create Feature From XY Table** dialog window, set
 - a. X Field: **Longitude**
 - b. Y Field: **Latitude**
 - c. Z field: **(leave it empty)**
 - d. Click **Coordinate System of Input Coordinates** to launch the **Spatial Reference Properties** dialog window to define its coordinate system.



- e. In **Spatial Reference Properties** dialog window, click **Select** to choose the coordinate system in the folder **Geographic Coordinate Systems > World > WGS 1984.prj**. Click **Ok**.

(Hint: since the point data is collected using a GPS device, the coordinate system should be WGS84)

- f. Output feature name and location:
Field20_Soil_2008_WGS84.shp in the folder of **Dataset1**
4. Click **Ok**.
5. Refresh **Contents** window in ArcCatalog, the **Field20_Soil_2008_WGS84.shp** is appeared.
6. Open the shape file in a ArcMap document, if you want to see the map

Note: The shape has geographic coordinate system (Decimal degrees), need to convert project coordinate system for measurement and analysis in ArcGIS (next exercise - 1.4).

Create a point shapefile
for 2008 soil analysis
data

