

Tutorial Set 1: Working with ArcGIS

Exercise Site20_1-4 Converting coordinate systems

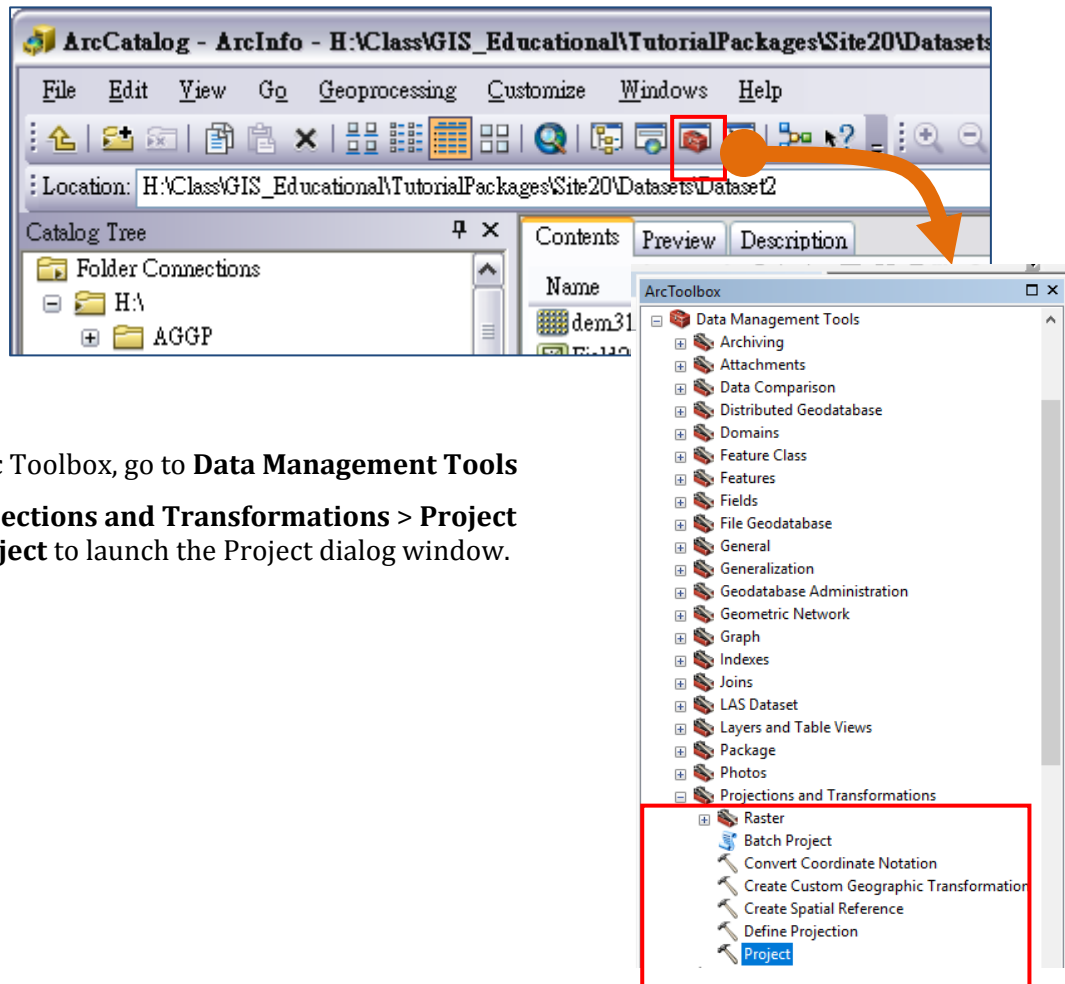
Learning objective: Converting a shapefile from geographic coordinate system to projected coordinate system

Techniques: ArcToolbox – Projection and Transformation

Data Source: Dataset1 folder

Part 1: Converting coordinates from a geographic coordinate system to a projected coordinate system

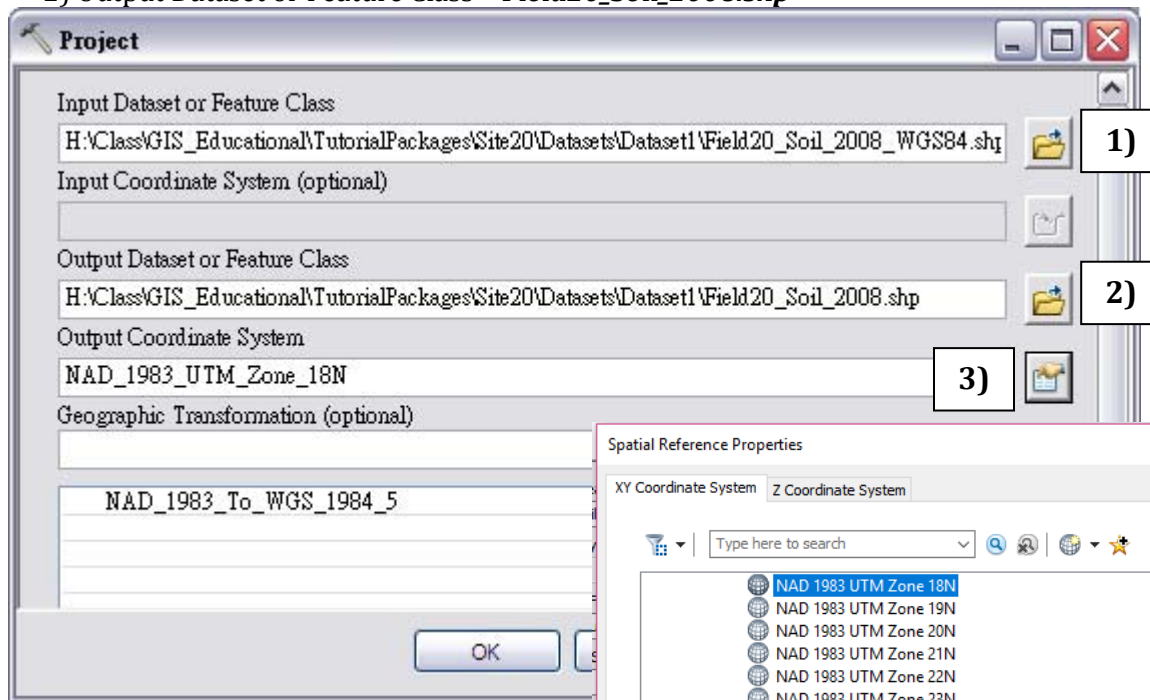
1. In **ArcCatalog**, launch **Arc Toolbox**.



2. In Arc Toolbox, go to **Data Management Tools**
> **Projections and Transformations** > **Project**
> **Project** to launch the Project dialog window.

3. In the **Project** dialog window, set:

- 1) Input Dataset or Feature Class = **Field20_Soil_2008_WGS84.shp**
- 2) Output Dataset or Feature Class = **Field20_Soil_2008.shp**



3) Output Coordinate System =

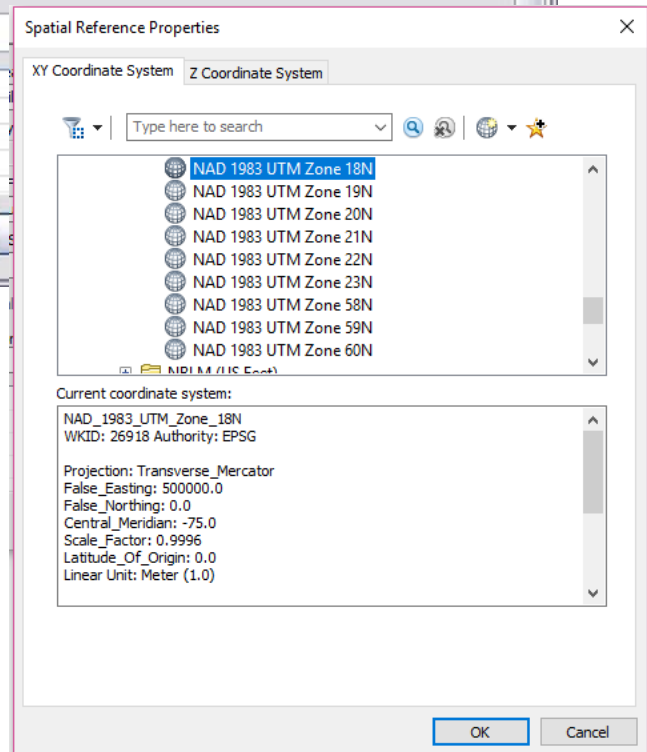
Launch **Spatial Reference Properties**

Click **Select**

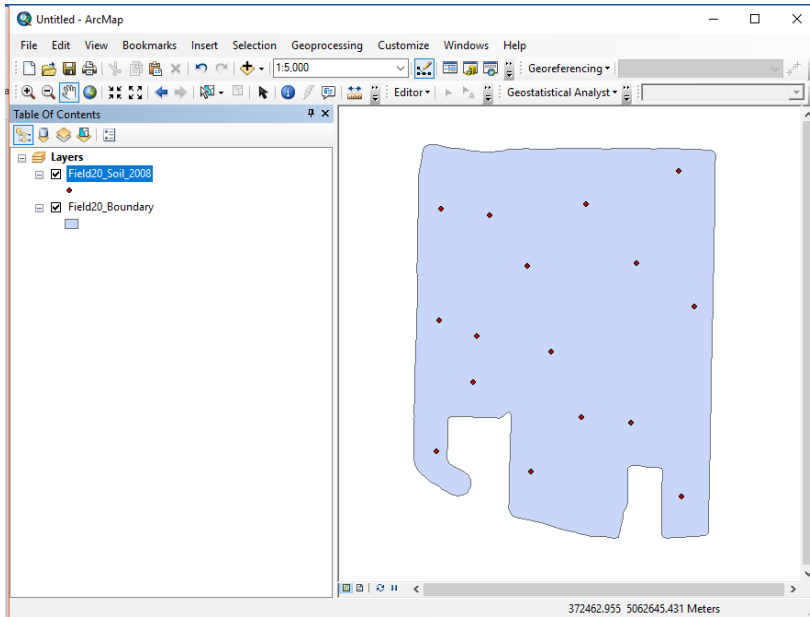
- > Projected Coordinated Systems
- > UTM
- > NAD 1983
- > *NAD 1983 UTM Zone 18N.prj*

Click **OK** to exit **Spatial Reference Properties**

Click **OK** to exit **Project Tool**.



4. Now, the projected layer ***Field20_Soil_2008.shp*** is shown in **Contents** window in **ArcCatalog**.
5. Drag/drop ***Field20_Soil_2008.shp*** and ***Field20_boundary.shp*** to ArcMap for visualization.
6. Close the ArcMap



7.