

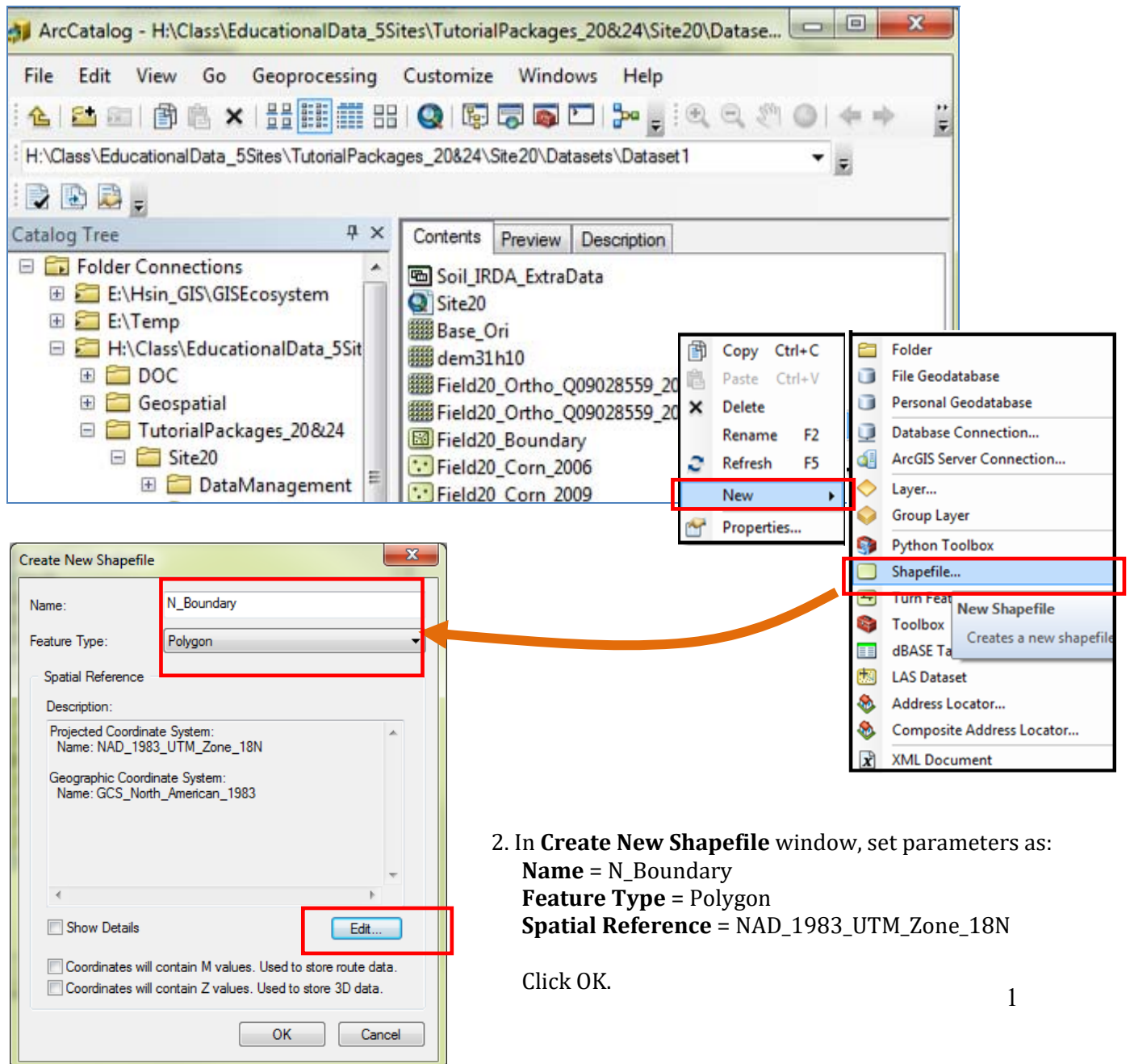
Tutorial Set 1: Working with ArcGIS

Exercise Site20_1-6 Digitizing a new field boundary

Learning objective: Creating any new boundary/polygon by digitizing on the image
Techniques: Editor Tool
Data Source: Dataset1

Part 1: Creating a new shapefile in the ArcCatalog

1. In **ArcCatalog**, right click in the blank area in **Contents** window to add a new shapefile



The screenshot shows the ArcCatalog interface. The 'Contents' window is right-clicked, and the 'New' menu is open, highlighting 'Shapefile...'. The 'Create New Shapefile' dialog box is shown with the following parameters:

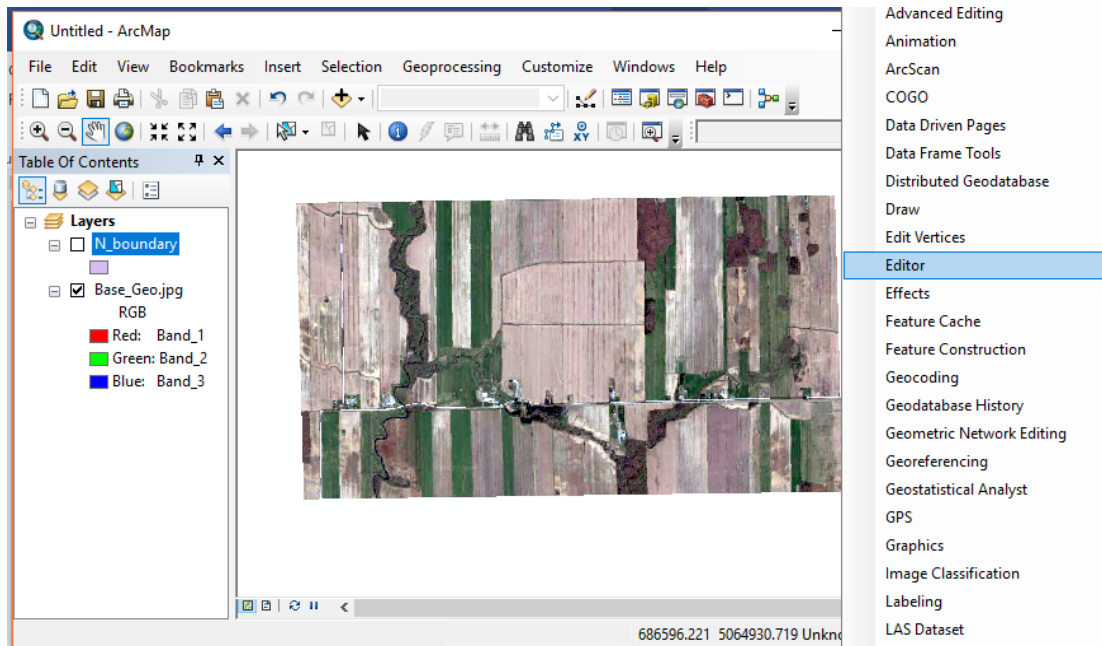
- Name:** N_Boundary
- Feature Type:** Polygon
- Spatial Reference:** NAD_1983_UTM_Zone_18N

The 'Edit...' button is highlighted in the dialog box.

2. In **Create New Shapefile** window, set parameters as:
Name = N_Boundary
Feature Type = Polygon
Spatial Reference = NAD_1983_UTM_Zone_18N

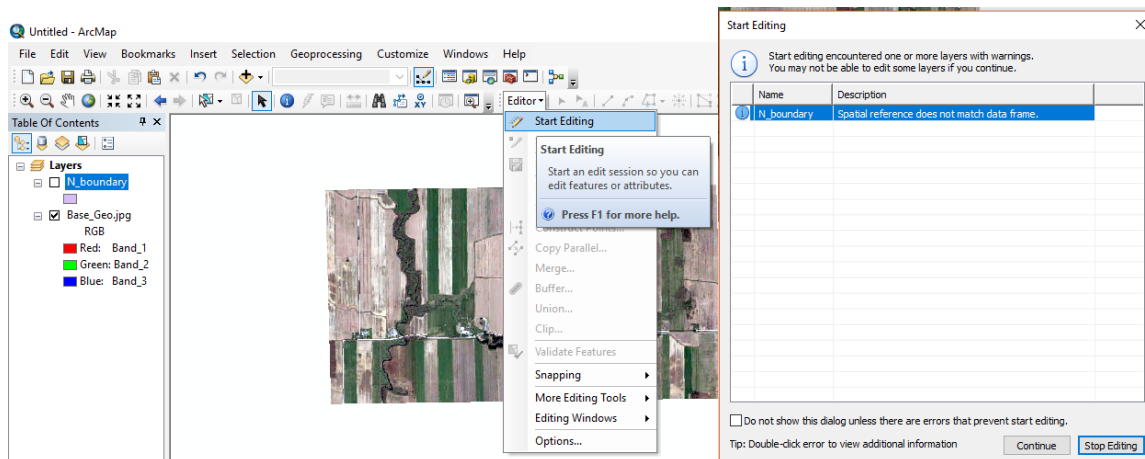
Click OK.

3. Drag and drop *N_Boundary.shp* and *Base_Geo.jpg* into ArcMap from the ArcCatalog.

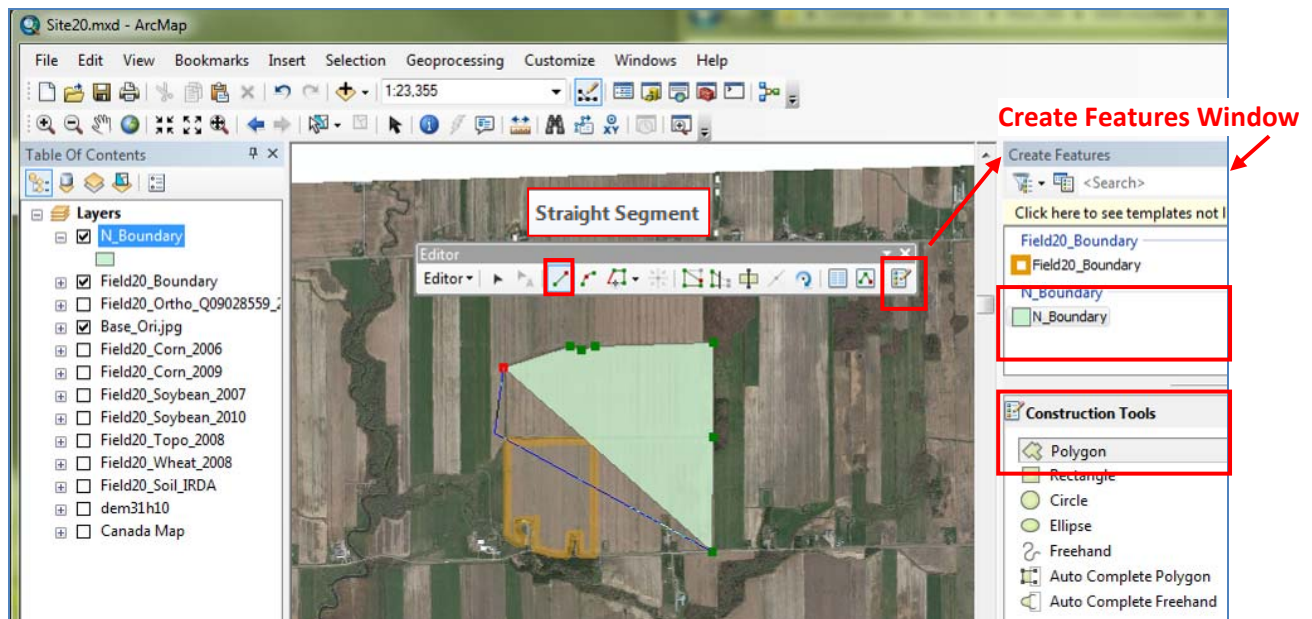


Part 2: Digitizing a new boundary using the Editor Tool

1. Add **Editor Tool** to the Tool Bar by right clicking on the Tool Bar. When **Editor** is added to the Tool Bar, go to **Editor > Start Editing**. Choose *N_Boundary* as the target editing layer, and click **Continue**.



2. In **Create Features** window, select *N_Boundary*
 - Select **Construction Tools** as a free shape **Polygon**.
 - **Straight Segment** function is automatically activated.
 - Start to digitize the ground features (move the cursor to the View window and click on the image to add multiple vertices following the boundary of a field).
 - Once finish, simply double click at the latest point to finish editing this polygon.
 - Go to **Editor > Save Edits** and **Editor > Stop Editing** to save and close the editing mode.



3. More advanced editing functions can be found in **Editor Tool** bar. By simply activating the **Editor**, choose the target layer and click on the desired functions, such as **Cut Polygon Tool** (to split), **Editing Vertices** (to adjust shapes). Remember to save any new editing before exiting the editing mode.