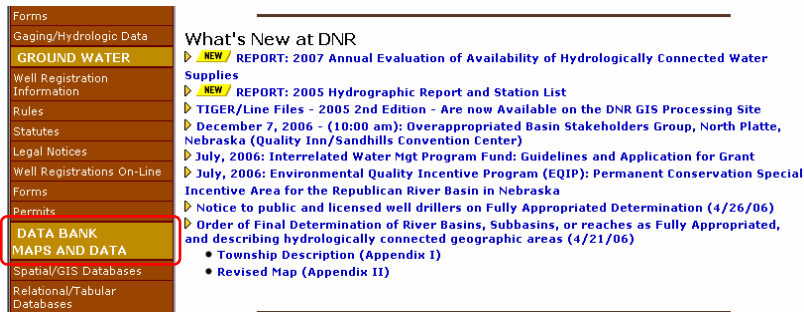


Lesson 1 - Downloading Publicly Available Data

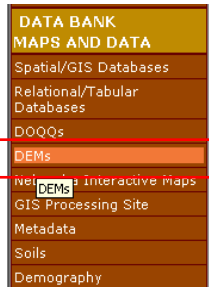
Exercise 1-3

Objective: Retrieval of **Digital Elevation Models (DEMs)** from Nebraska Department of Natural Resources web site.

1. Go to the Nebraska Department of Natural Resources (DNR) website at www.dnr.ne.gov and locate the **DATA BANK - MAPS AND DATA** section.



2. Click the **DEMs** tab.



3. On the following page, select the **10-meter DEM Text Interface** section.

Availability of DEMs (10-meter)

The Nebraska Department of Natural Resources, in cooperation with the U. S. Geological Survey, developed 10-meter interval, Level 2, DEMs for the State of Nebraska. These DEMs are produced in 7.5 minute quadrangle units drawn to 1:24,000 scale, and are referenced to NAD 27 and UTM projections. The elevation units are in **feet** relative to NGVD 1929.

Following options are available to retrieve 10-meter DEMs:

- **DNR Map Interface**
 - Identify and download DEMs click on both active and visible layers of the Quad (DEM) dataset and click the "refresh map" button on the interactive map.
 - Zoom in using the magnifying glass tool with the plus sign, then click hyperlink(lightning bolt) from the tool box and click the proper quadrangle to download the DEM. Provides access to both 10 and 30-meter DEMs.
- **10-meter DEM Text Interface.**
- **DNR FTP Site** - (10-meter)
 - The DEMs may require 1MB to 2MB of storage space per 7.5 minute quadrangle. The transmission of data over high-speed Internet link could take 15-minutes or more per DEM coverage. The transfer of data at communication speeds less than 56KB/sec is generally not recommended.

4. On the following page, check the **10M DEMS** option and select **Saunders County** from the list provided. Click **Search**.

DEM Search by County

Select a county and press submit. You will be returned a list of all the DEM's (Digital Elevation Models) available for that county. Check the DOQ Status Map for which counties are available.

10M DEMS

30M DEMS

Select a county from the following list:

SAUNDERS

SCOTT'S BLUFF

SEWARD

SHERIDAN

SHERMAN

SIOLX

STANTON

THAYER

5. On the new page under Quad Name, select **MEAD**.

Nebraska Department of Natural Resources
Data Bank
Database Through: 1/30/2007
Processed: 1/30/2007 10:52:07 AM

DEM DATA RETRIEVAL

-1 DEM's met this criteria.

QuadName	Quadrant	Zone	Source Date	Inspection Date	Type
ASHLAND EAST	48148	14	1966	2001	10 Meter DEM
ASHLAND WEST	48149	14	1968	2000	10 Meter DEM
WAHCO SE	48150	14	1968	2000	10 Meter DEM
CERESCO	48151	14	1968	2000	10 Meter DEM
VALPARAISO	48152	14	1968	2000	10 Meter DEM
VALPARAISO SW	48153	14	1968	2000	10 Meter DEM
WANN	49148	14	1966	2002	10 Meter DEM
MEAD	49149	14	1968	2002	10 Meter DEM
WAHCO EAST	49150	14	1968	2002	10 Meter DEM
WAHCO WEST	49151	14	1968	2002	10 Meter DEM
TOUHY	49152	14	1967	2002	10 Meter DEM

6. On the following page, click the **Shaded Relief Map of 49149.dem** link.

DEM DATA RETRIEVAL

Source: Nebraska Department of Natural Resources
Data Base Updated Through 1/30/2007
Processed by: Nebraska Department of Natural Resources
(JH 10/01)

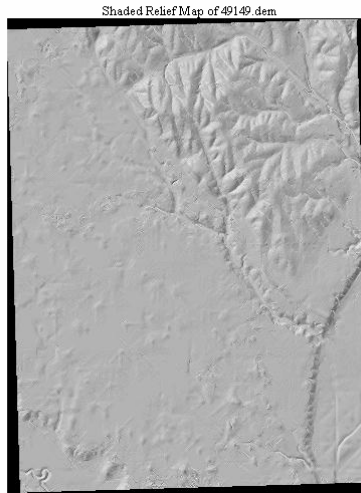
Nebraska DEM Coverage for Quadrangle MEAD
Options Available:

[Shaded Relief Map of 49149.dem](#)
["Right Click" Here to Download DEM 49149.zip](#)

The compressed DEMS's require about 1MB of storage space per 7.5 minute quadrangle. The regular (unzipped/uncompressed) DEM's are available upon request from the Agency, and require about 10MB of storage space per quadrangle.

As a result, the following 3D representation of the entire quad area will be displayed:

Nebraska DEMs



7. Return to the previous page and right click "**Right Click**" **Here to Download DEM 49149.zip** link. Select **Save Target As** option and save **the 49149.zip** file to your working directory.
8. Using **Windows Explorer**, right click the **49149.zip** file name, select **the Extract all** option and extract **the 49149.dem** file containing the Digital Elevation Model for the area of interest.

