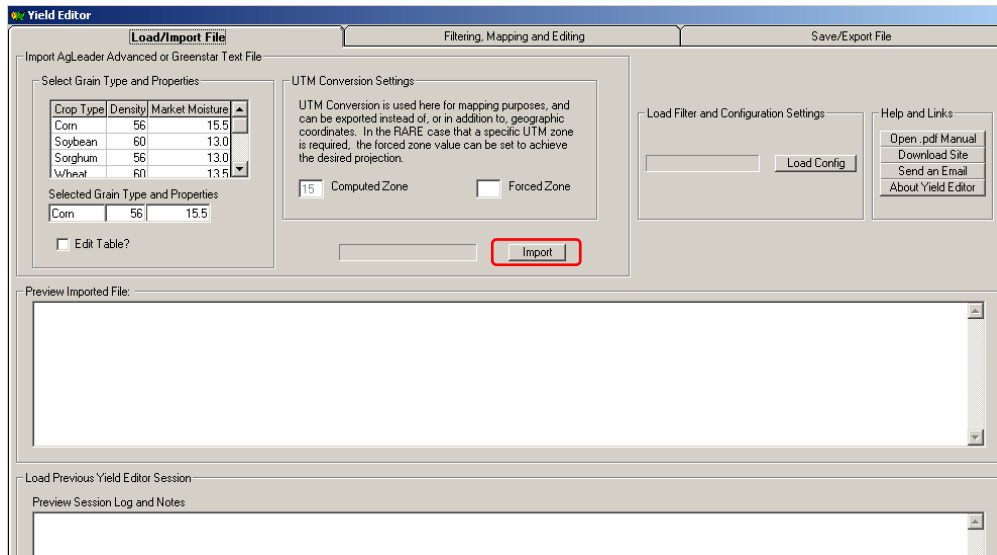


Lesson 3 - Processing a Multi-Layer Yield History

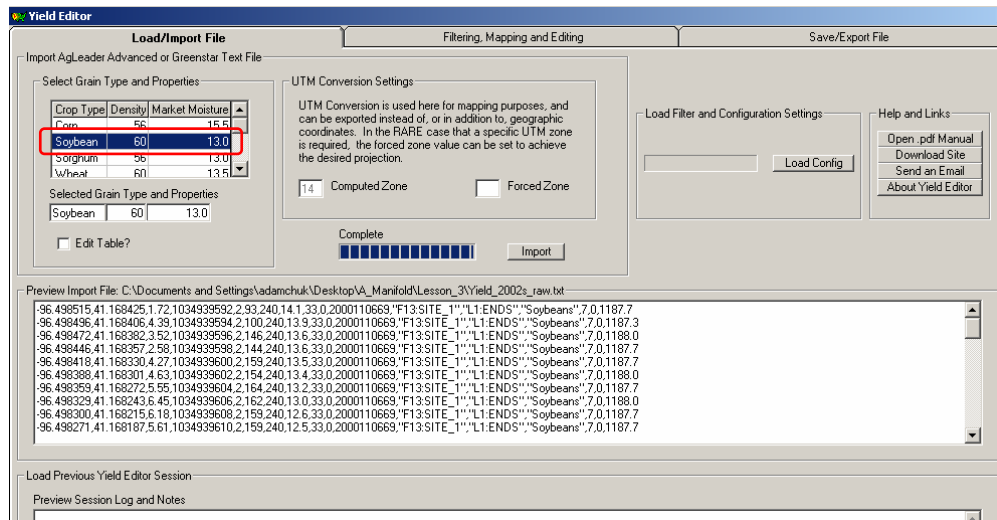
Exercise 3-1

Objective: Adjust yield data for various combined dynamics delays and filter out records containing erroneous data.

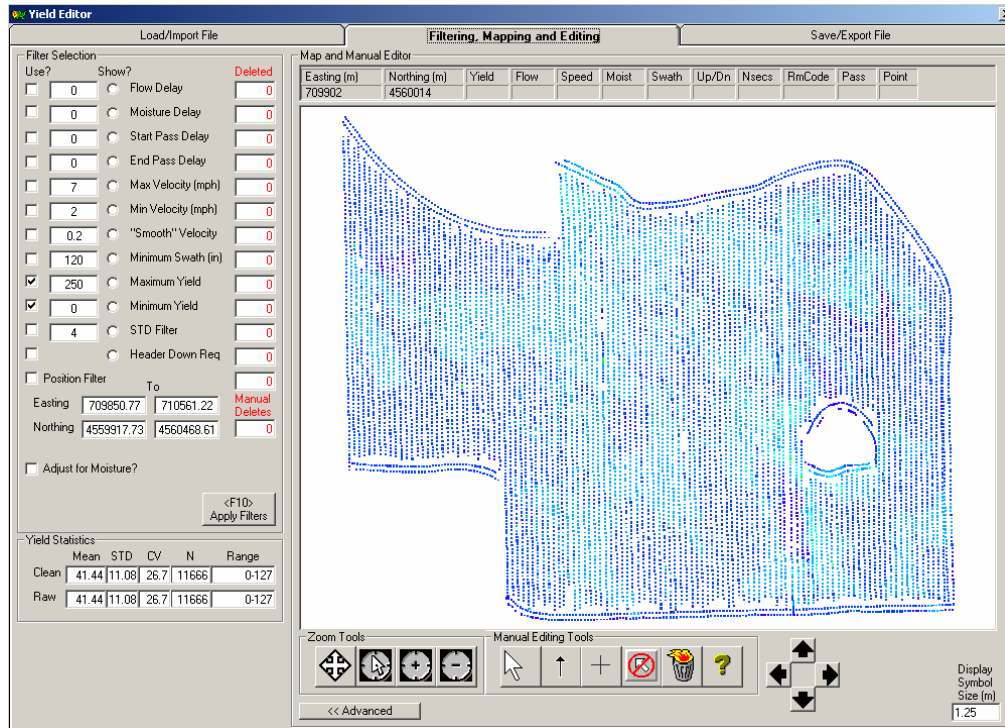
1. Download and install the *Yield Editor* software and open it. Click the **Import** icon and navigate to *the Yield_2002s_raw* data file.



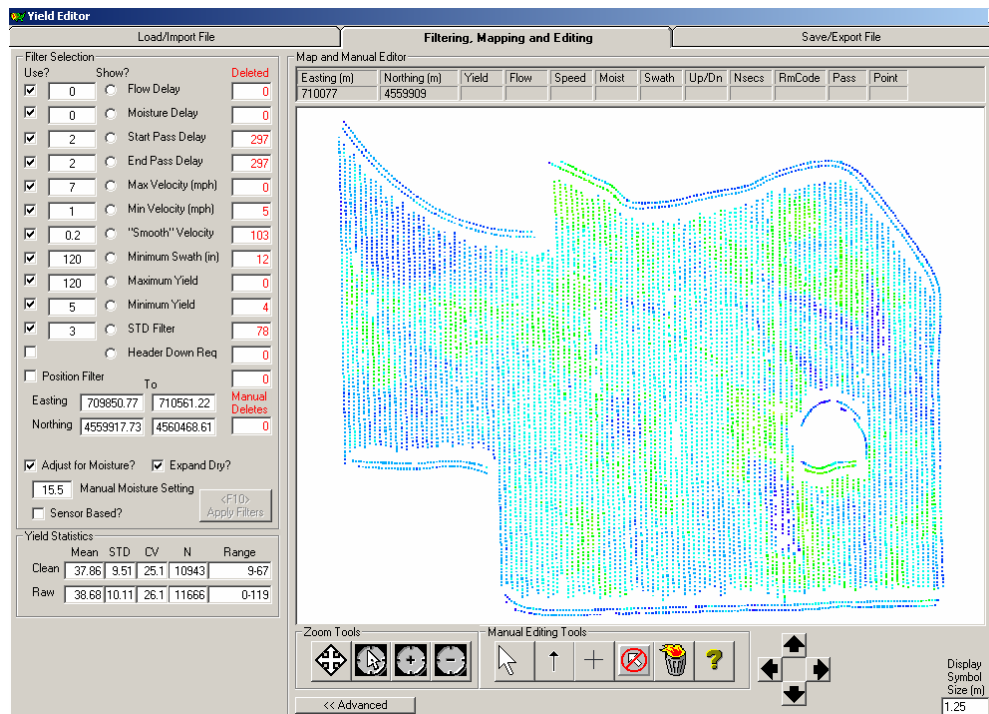
2. Double click *Soybean* in the **Select Grain Type and Properties** window.



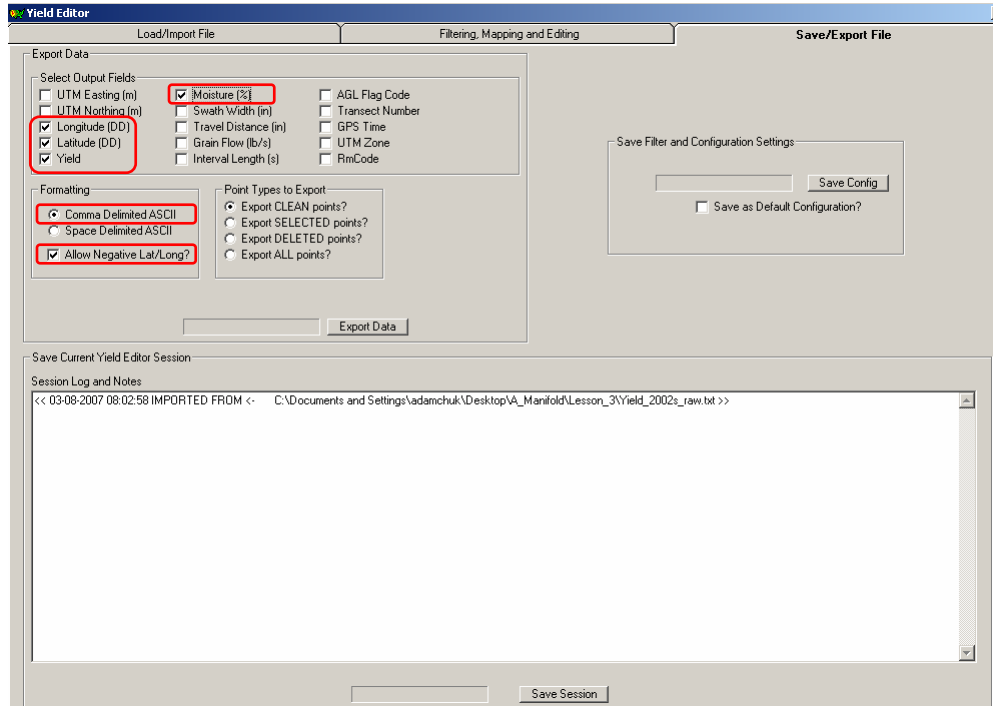
3. Click the **Filtering, Mapping and Editing** tab.



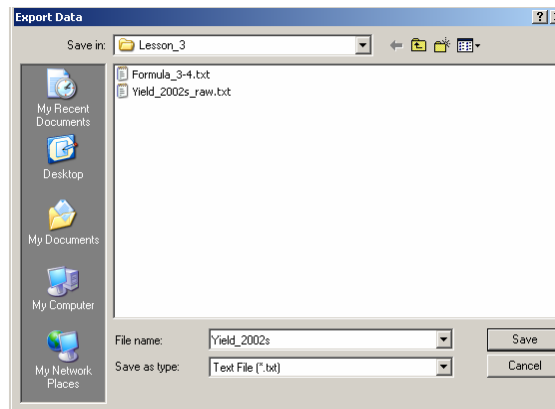
- In the **Filter Selection**, select **0** for **Flow Delay**, **0** for **Moisture Delay**, **2** for **Start Pass Delay**, **2** for **End Pass Delay**, **7** for **Max Velocity (mph)**, **1** for **Min Velocity (mph)**, **0.2** for **"Smooth" Velocity**, **120** for **Minimum Swath (in)**, **120** for **Maximum Yield**, **5** for **Minimum Yield**, and **3** for **STD Filter**. Check the boxes next to each filter. Check the **Adjust for Moisture?** and then the **Expand Dry** checkbox. Click **Apply Filters**.



5. Observe the outlier by checking the **Show** circle one by one.
6. Click the **Save/Export File** tab. In the new window, check the **Longitude (DD)**, **Latitude (DD)**, **Yield**, and **Moisture (%)** checkboxes under the **Select Output Fields** options. Also, check the **Comma Delimited ASCII** and **Allow Negative Lat/Long?** checkboxes under **Formatting** options as well as mark the checkbox **Export CLEAN points** under the **Point Types to Export** options. Click **Export Data**.



7. In the popup **Export Data** dialog box, choose **Text File (*.txt)** for the **Save as type** and write **Yield_2002s** in the **File name** box. Click **Save**.



- Open the saved **Yield_2002s.txt** file using **Notepad** and add “**Latitude, Longitude, Yield, Moisture**” header line to the saved file, as shown below.

