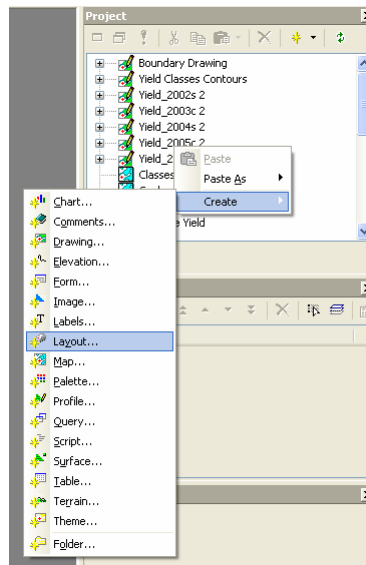


## Lesson 3 - Processing a Multi-Layer Yield History

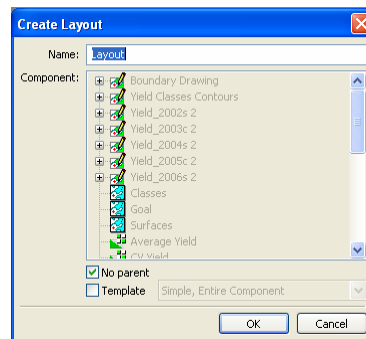
### Exercise 3-5

**Objective:** Create yield goal and yield-based management zone maps layout.

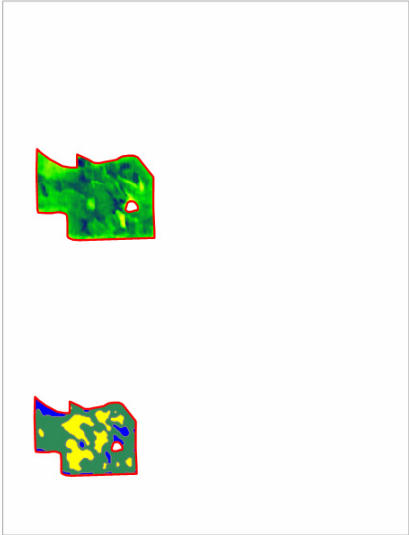
1. **File-Open *Project\_3-4.map*.**
2. Right click an empty location in the **Project** pane and choose **Create-Layout**.



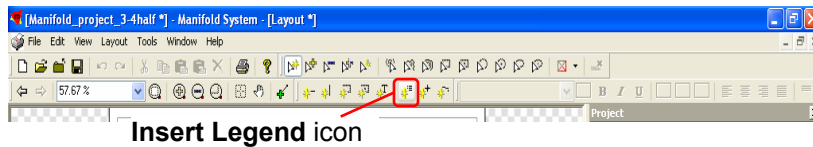
3. In the popup **Create Layout** dialog box, click **OK**.



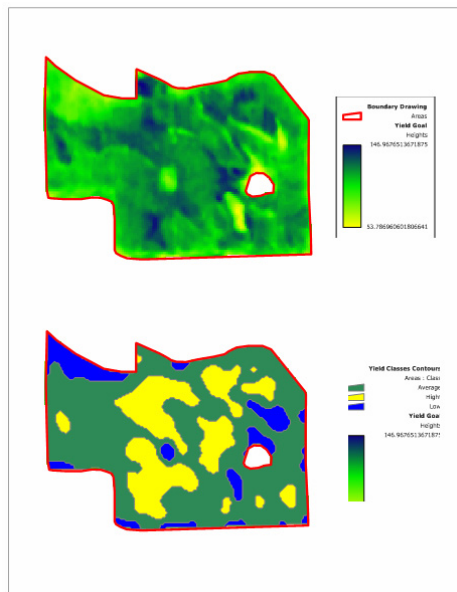
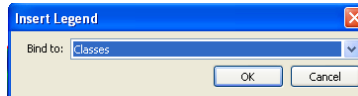
4. Double click the **Layout** component in the **Project** pane. Expand it by clicking the **Maximize** button at the top right corner of the window and click the **Zoom To Fit** icon.
5. Click and drag the **Classes** and **Goal** map components from the **Project** pane to the **Layout**. Hold **Ctrl** and **Alt** keys down and click on each inserted map (one at a time). Once the gray squares appear around the boundary of the map, it can be moved and resized.



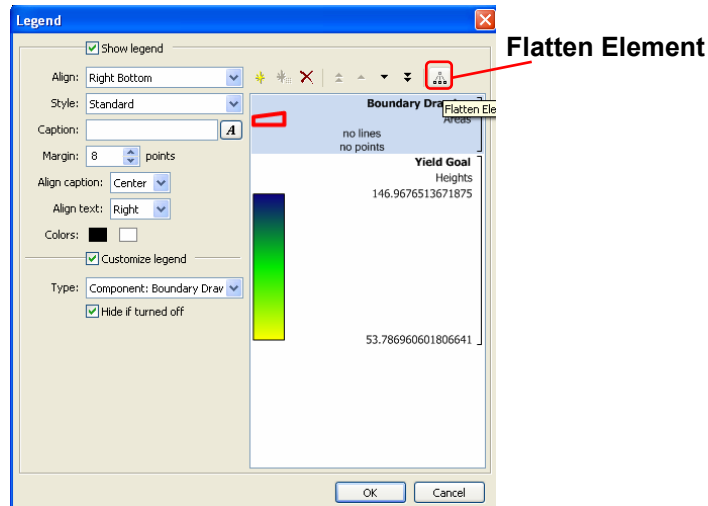
6. Insert a legend to each map using the **Insert Legend** icon from the layout **Tools** toolbar.



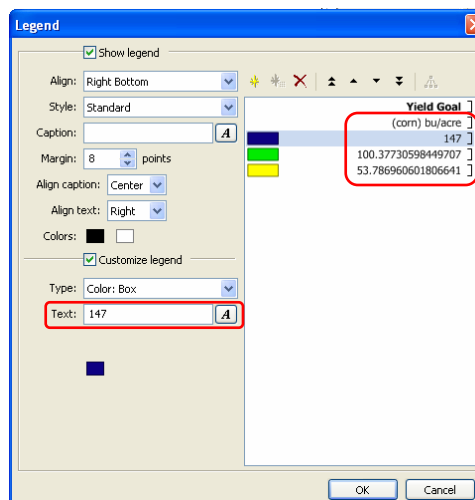
7. Click in the upper left corner of anticipated legend location and drag toward the lower right corner. In the popup **Insert Legend** dialog box, choose the name of the map (**Classes**) in the **Bind to** box. Click **OK**. Repeat this action for the **Goal** map.



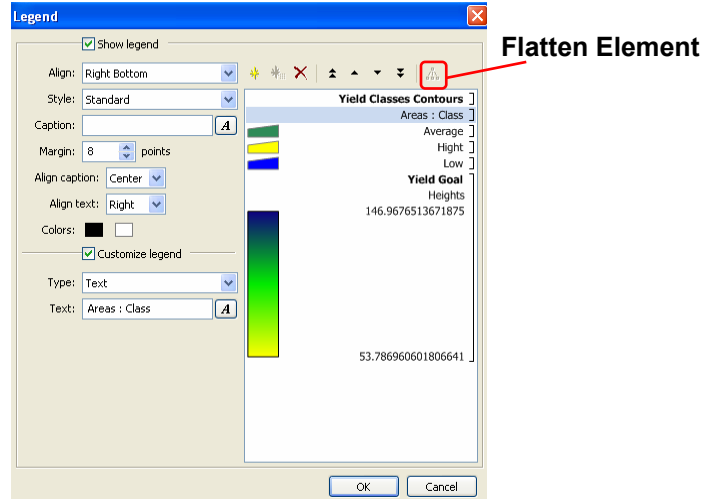
8. Double click the **Goal** legend to open the **Legend** dialog box and check the checkboxes next to **Show legend** and **Customized legend**. Click the **Delete Element** icon to remove the **Boundary Drawing** element from the legend and then click the **Flatten Element** icon to modify the surface legend. Once the element flattening is performed the legend becomes fixed.



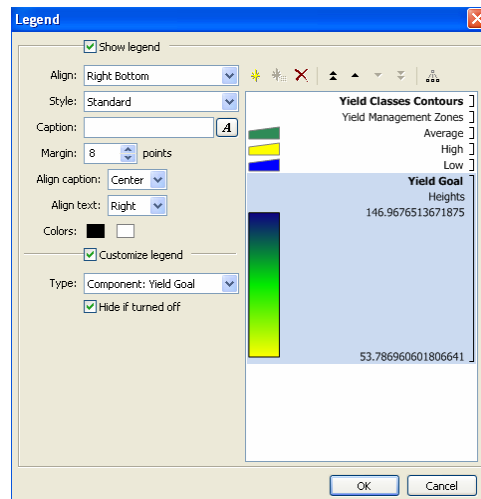
9. Click the **Heights** line at the right and enter **(corn) bu/acre** in the **Text** box at the left. Click the value below at the right side and enter **147** in the **Text** box. Again, click the other values at the right and enter **100** and **54**, respectively, in the **Text** box. Uncheck the **Show legend** check box. Click **OK**.



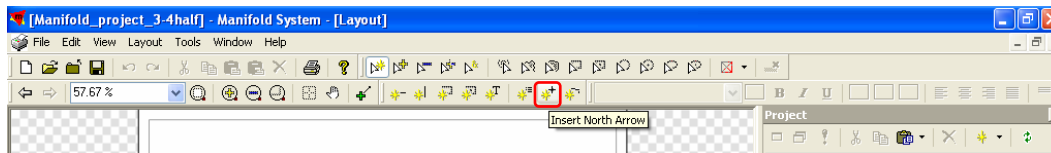
10. Double click the **Classes** legend to open a new **Legend** dialog box and check the checkboxes next to **Show legend** and **Customized legend**. Click the **Delete Element** icon to remove the **Boundary Drawing** element and then click the **Flatten Element** icons.



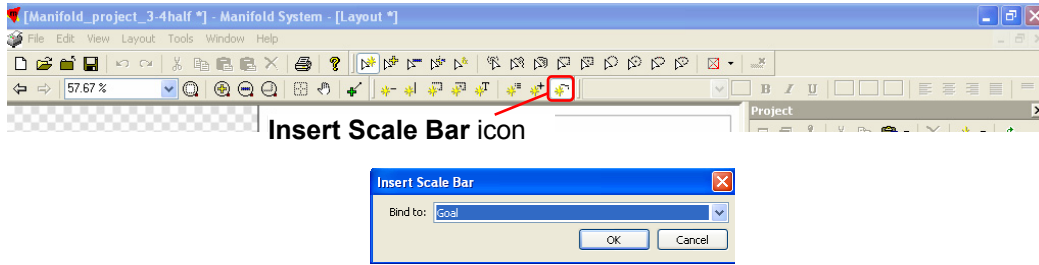
- Click the *Areas* line on the right side and enter *Yield Management Zones* in the **Text** box. Click the *Yield Goal* element on the left side and click **Delete Element**. Uncheck the **Show legend** checkbox and click **OK**.



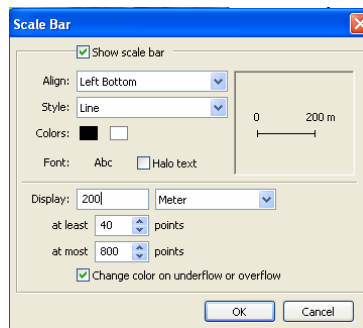
- Insert a north arrow using the **North Arrow** icon from the **Tools** toolbar.



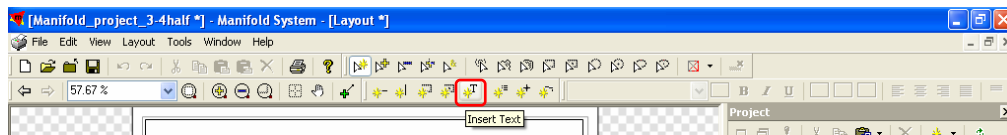
- Insert a scale bar for each map using the **Insert Scale Bar** icon from the **Tools** toolbar. Click and drag the mouse pointer horizontally to a location appropriate for the scale bar. In the popup **Insert Legend** dialog box, choose the name of the map (*Goal*) in the **Bind to** box. Click **OK**. Repeat this for the *Classes* map.



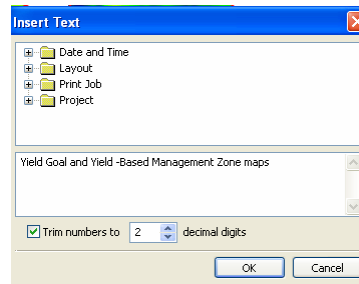
14. Unselect the Insert Scale Bar icon. Double click the first scale bar. In the popup **Scale Bar** dialog box check the **Show scale bar** checkbox and type **200** in **Display** box. Then uncheck the **Show scale bar** checkbox and click **OK**. Repeat the same for the second scale bar.



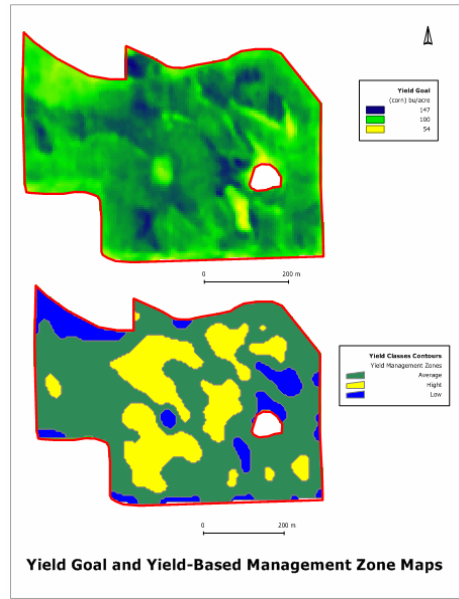
15. Add a title to the layout using the **Insert Text** icon from the **Tools** toolbar.



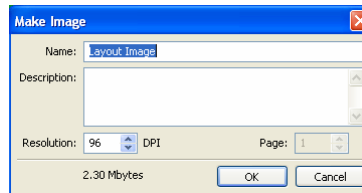
16. Click at the location of the expected start of the title line. In the popup **Edit Text** dialog box, type **Yield Goal and Yield-Based Management Zone Maps** in the text box and click **OK**.



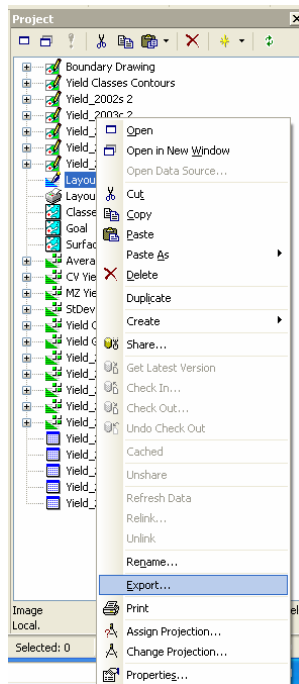
*The final layout of two maps should look like:*



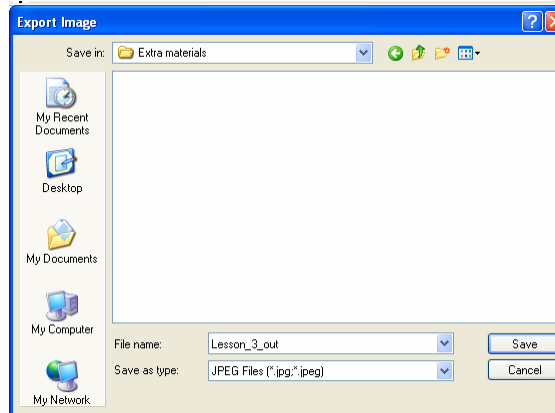
17. From the **Tools** menu, select **Make Image**. In the popup **Make Image** dialog box, click **OK**.



18. Right click the **Layout** image component in the **Project** pane and choose **Export**.



19. In the **Export Image** dialog box select **JPEG Files (\*.JPG,\*.JPEG)** in the **Save as type** box and type **Lesson\_3\_out.jpg** in the **File name** box. Click **Save**.



*This step will save a graphic image of the layout, which can be sent via e-mail, printed out or inserted into a Word document or a PowerPoint presentation.*

20. **File-Save As *Manifold\_project\_3-5.map*.**