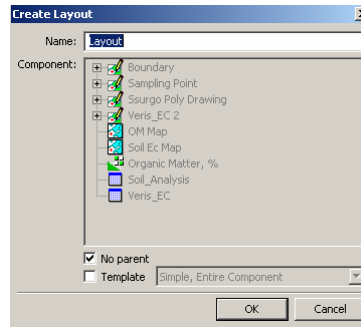


Lesson 4 - Visualization and Analysis of Soil Data

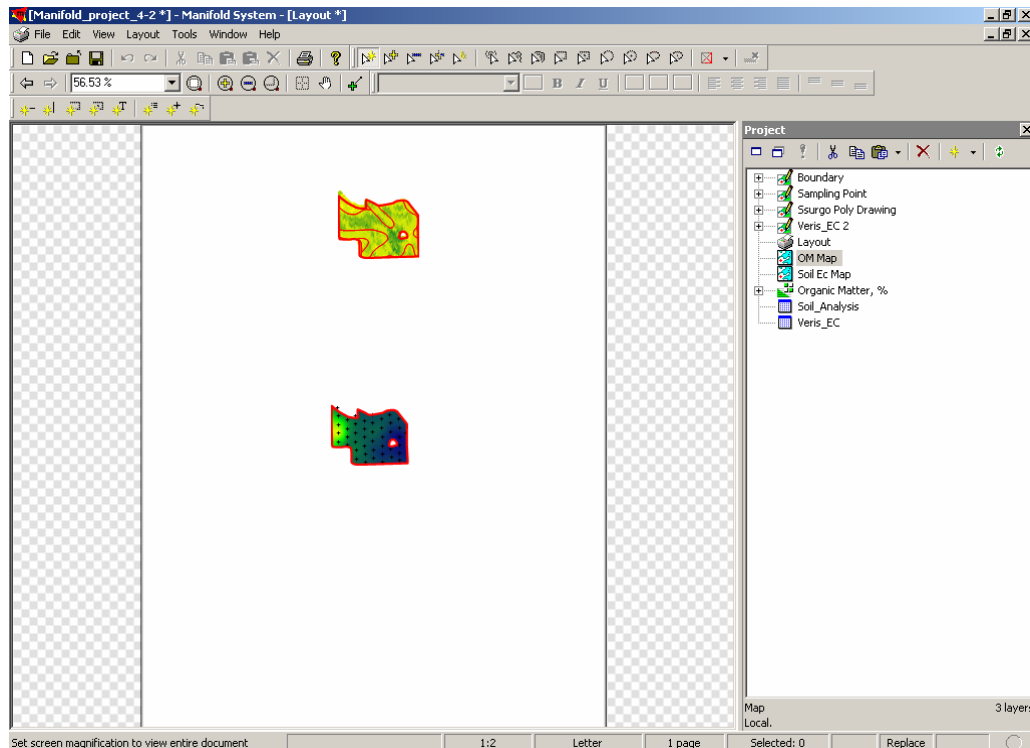
Exercise 4-3

Objective: Create a layout of soil electrical conductivity and organic matter maps.

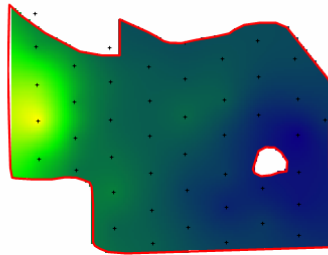
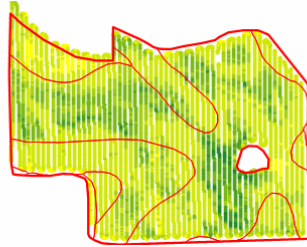
1. **File-Open *Project_4-2.map*.**
2. Right click an empty location in the Project pane and select **Create-Layout**. In the popup **Create Layout** dialog box, click **OK**.



3. Double-click the **Layout** component in the **Project** pane. Expand the map using the **Maximize** button and click the **Zoom To Fit** icon.
4. Drag the **Soil EC** and **OM** map components from the project pane to the **Layout**.



5. Hold the **Ctrl** and **Alt** keys and click on a map to be moved and resized. Adjust the position and dimensions of both maps.



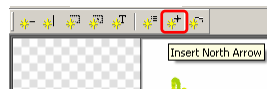
6. Click the **Insert Legend** icon from the layout **Tools** toolbar to add the legends.



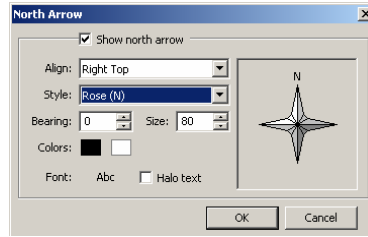
7. Drag the mouse marking the two opposite corners of the expected legend location. In the popup **Insert Legend** dialog box, select **Soil EC Map** in the **Bind to** box and click **OK**. Repeat this action for **OM Map**.



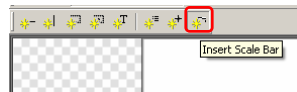
8. Insert a north arrow using the **North Arrow** icon from the **Tools** toolbar.



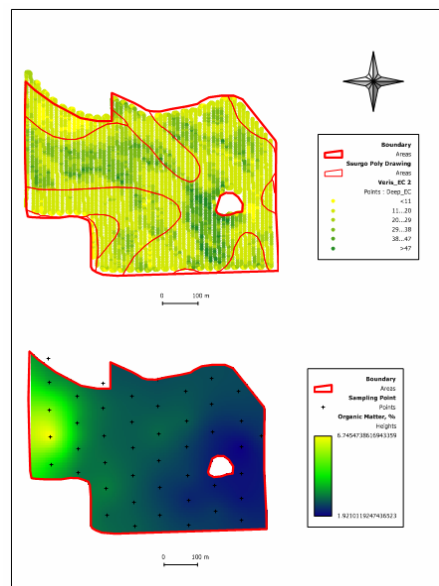
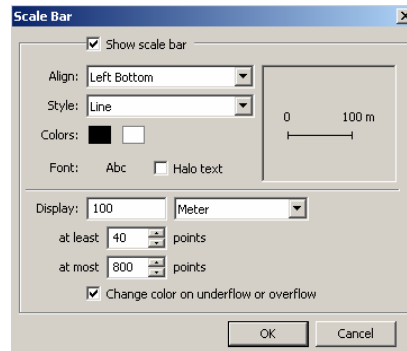
9. Click the North Arrow icon again. Double-click the north arrow itself. In the popup **North Arrow** dialog box check the **Show north arrow** checkbox and choose the **Rose (N)** option in the **Style** box. Uncheck the **Show north arrow** checkbox and click **OK**.



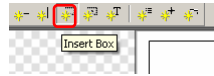
10. Click the **Insert Scale Bar** icon from the **Tools** toolbar and drag the mouse below each map to place two scale bars. In the popup **Insert Scale Bar** dialog box, select the name of the corresponding maps in the **Bind to** box and click **OK**. Repeat for the other map.



11. Click the **Insert Scale Bar** icon again. Double-click each scale bar (one at a time). In each popup **Scale Bar** dialog box, check the **Show scale bar** check box and enter **100** in **Display** box. Uncheck the **Show scale bar** checkbox and click **OK**.



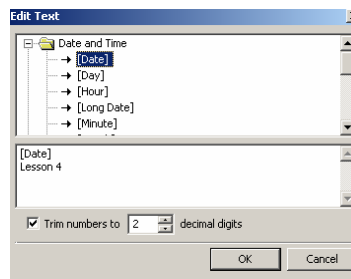
12. Insert a **Box** around the layout using the **Insert Box** icon from the **Tools** toolbar.



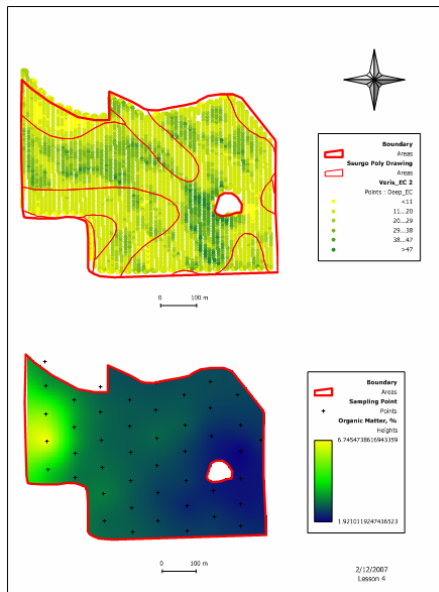
13. Insert the date and the lesson number using the **Insert Text** icon from the **Tools** toolbar.



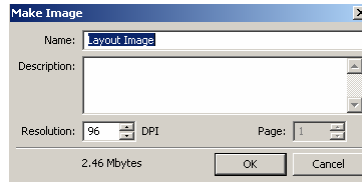
14. In the popup **Edit Text** dialog box, double-click the **Date** field from the upper box and type **Lesson 4** beneath **[Date]** in the lower box. Click **OK**.



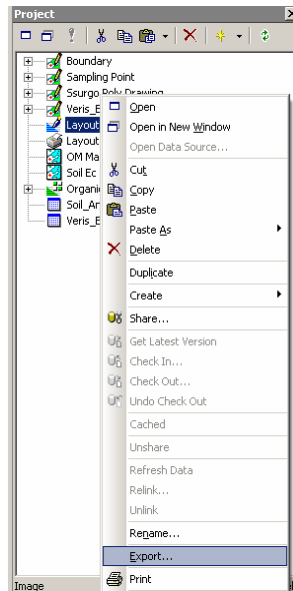
The resultant layout should look as follows:



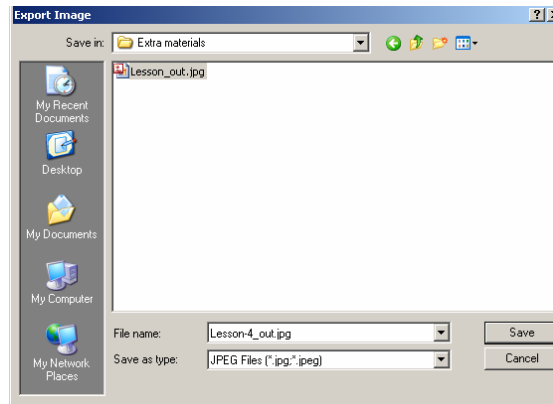
15. From the **Tools** menu select the **Make Image** option. In the popup **Make Image** dialog box, click **OK**.



16. Right click the *Layout Image* component in the **Project** pane and select **Export**.



17. In the **Export Image** dialog box select *JPEG Files (*.JPG, *.JPEG)* in the **Save as type** box and type *Lesson_4_out* in the **File name** box (make sure to navigate to a proper saving location). Click **Save**.



18. File-Save As *Project_4-3.map*.