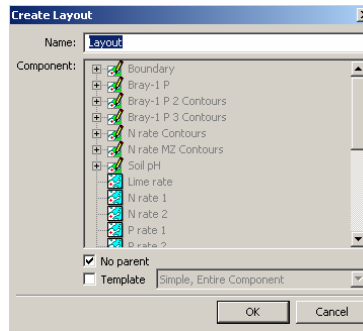


## Lesson 5 - Creating Prescription Maps

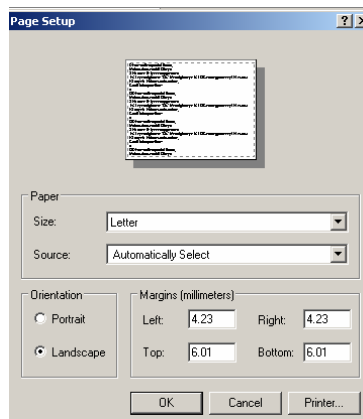
### Exercise 5-4

**Objective:** Use a map layout to compare different application maps.

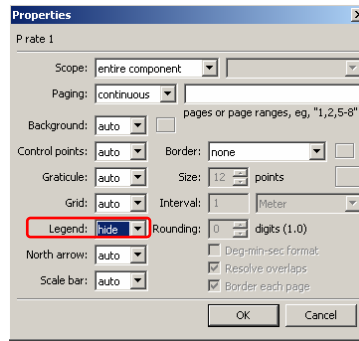
1. **File-Open *Project\_5-3.map*.**
2. Right click an empty location in the **Project** pane and select **Create-Layout**. In the popup **Create Layout** dialog box, click **OK**.



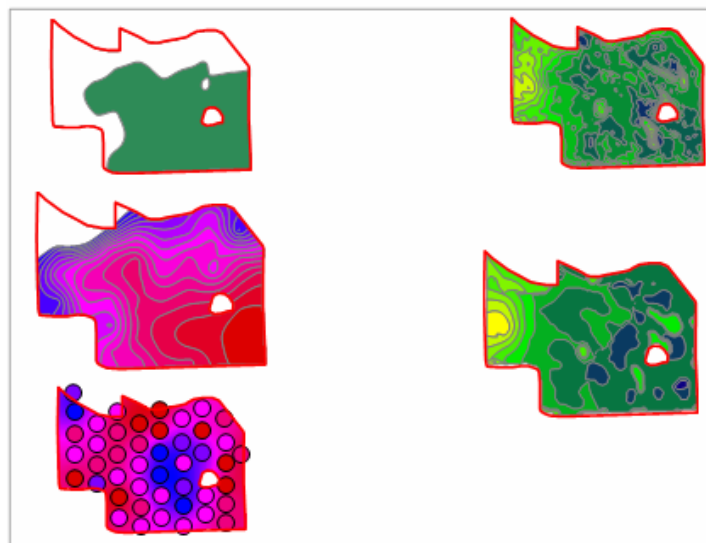
3. Double-click the **Layout** component in the **Project** pane. Click the **Maximize** button and the **Zoom To Fit** icon. From the **File** menu select **Page Setup**. In the popup **Page Setup** dialog box select **Landscape** and click **OK**.



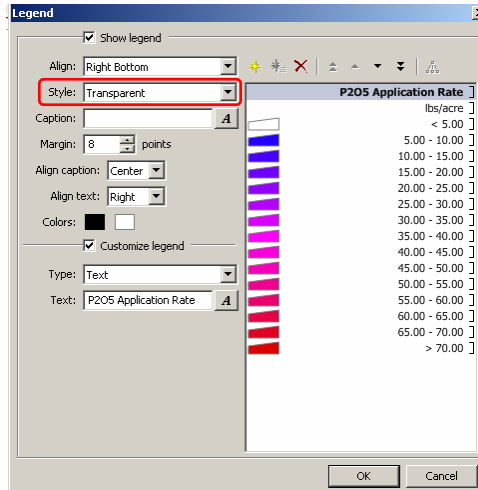
4. Drag and drop five application rate maps (Exercises 5-1, 5-2 and 5-3). Press and hold the **Ctrl** and **Alt** keyboard keys to select an individual map to be moved and/or resized.
5. One by one, double-click each map and select the **hide** option for the **Legend** box.



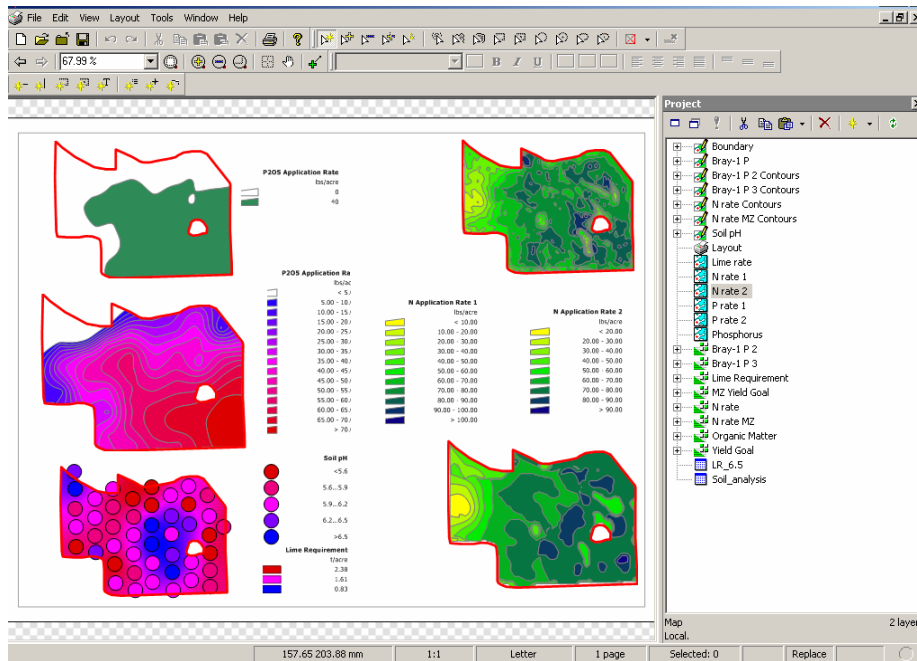
*Following is the recommended positioning of the five maps:*



6. Click the **Insert Legend** icon and mark the potential locations for the legends (click and hold the mouse while dragging along a diagonal of the rectangular for the new legend). In the popup menu **Insert Legend** dialog box choose the name of the corresponding map in the **Bind to** box. Repeat the same process for each of five maps. The legends can be moved and resized similar to the maps (**Ctrl** and **Alt** keys).
7. To remove the frame around each legend, right-click each legend and select **Edit**. In the popup dialog box, choose **Transparent** for the **Style** box. Click **OK**.



The final layout with five maps and corresponding legends should look similar to:



8. File-Save As *Project\_5-4.map*.