

Tutorial Set 1: Working with ArcGIS

Exercise Site20_1-4 Converting coordinate systems

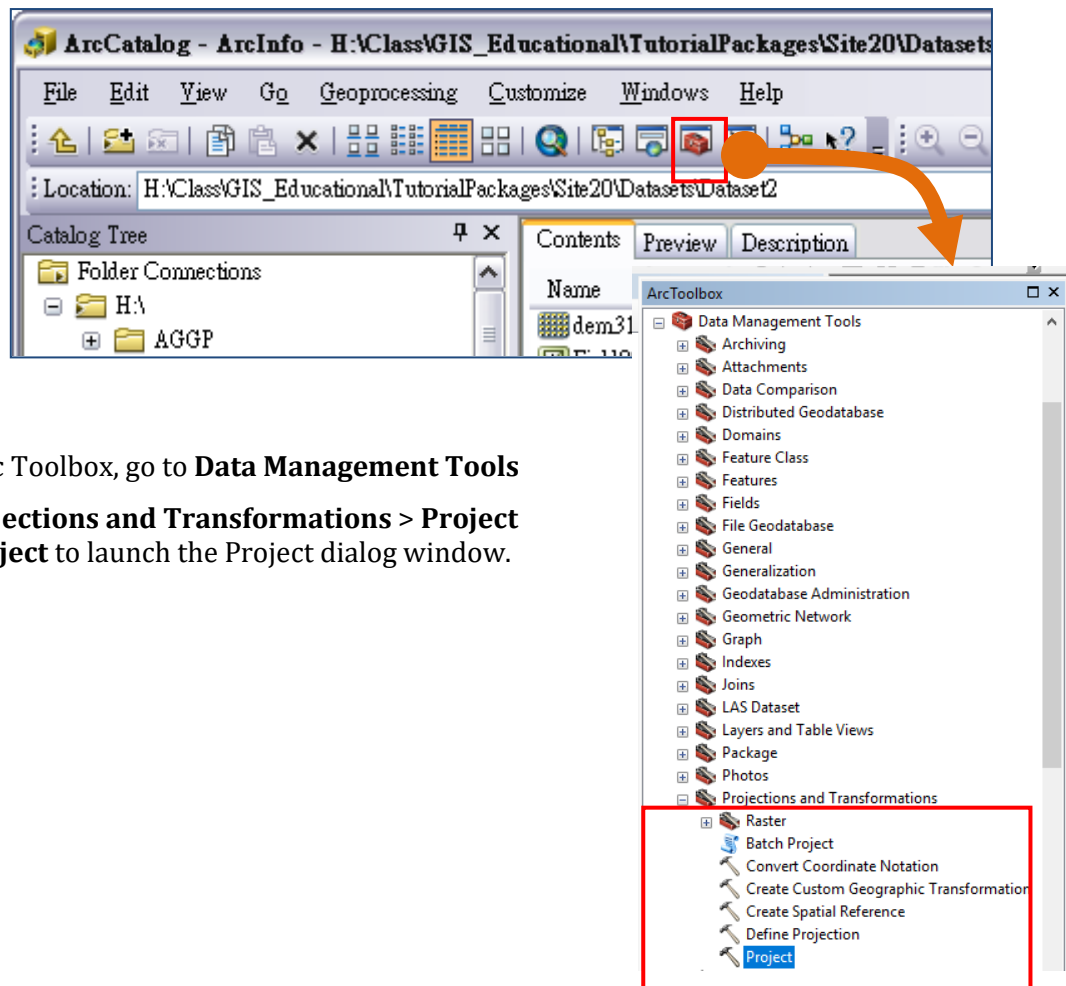
Learning objective: Converting a shapefile from geographic coordinate system to projected coordinate system

Techniques: ArcToolbox – Projection and Transformation

Data Source: Dataset1 folder

Part 1: Converting coordinates from a geographic coordinate system to a projected coordinate system

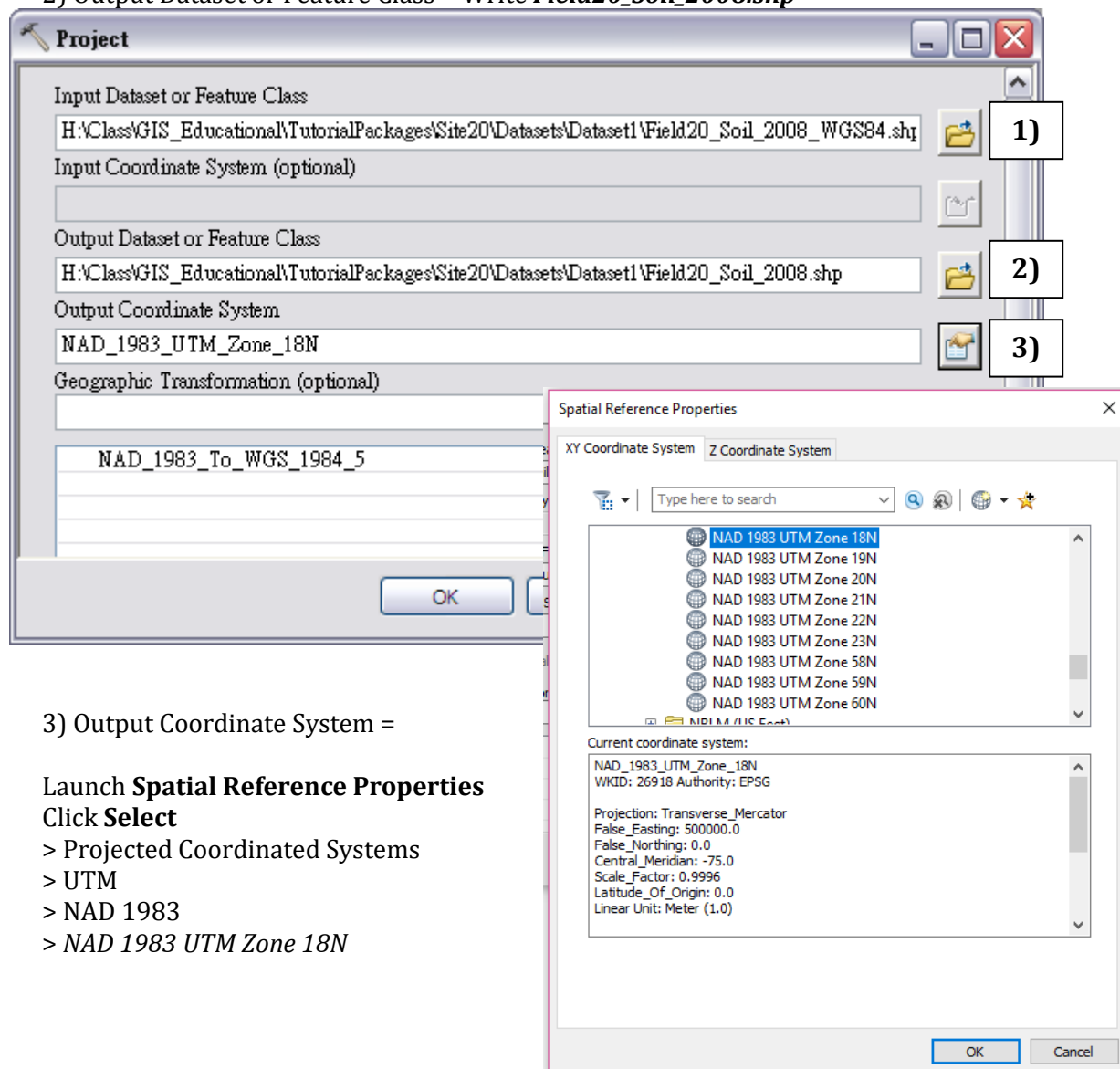
1. In **ArcCatalog**, launch **Arc Toolbox**.



2. In Arc Toolbox, go to **Data Management Tools**
> **Projections and Transformations** > **Project**
> **Project** to launch the Project dialog window.

3. In the **Project** dialog window, set:

- 1) Dataset or Feature Class = Select **Field20_Soil_2008_WGS84.shp**
- 2) Output Dataset or Feature Class = Write **Field20_Soil_2008.shp**



3) Output Coordinate System =

Launch **Spatial Reference Properties**

Click **Select**

> Projected Coordinated Systems

> UTM

> NAD 1983

> NAD 1983 UTM Zone 18N

Click **OK** to exit **Spatial Reference Properties**

Click **OK** to exit **Project Tool**.

4. Now, the projected layer ***Field20_Soil_2008.shp*** is shown in **Contents** window in **ArcCatalog**.
5. Drag/drop ***Field20_Soil_2008.shp*** and ***Field20_boundary.shp*** to ArcMap for visualization.
6. Close the ArcMap

