

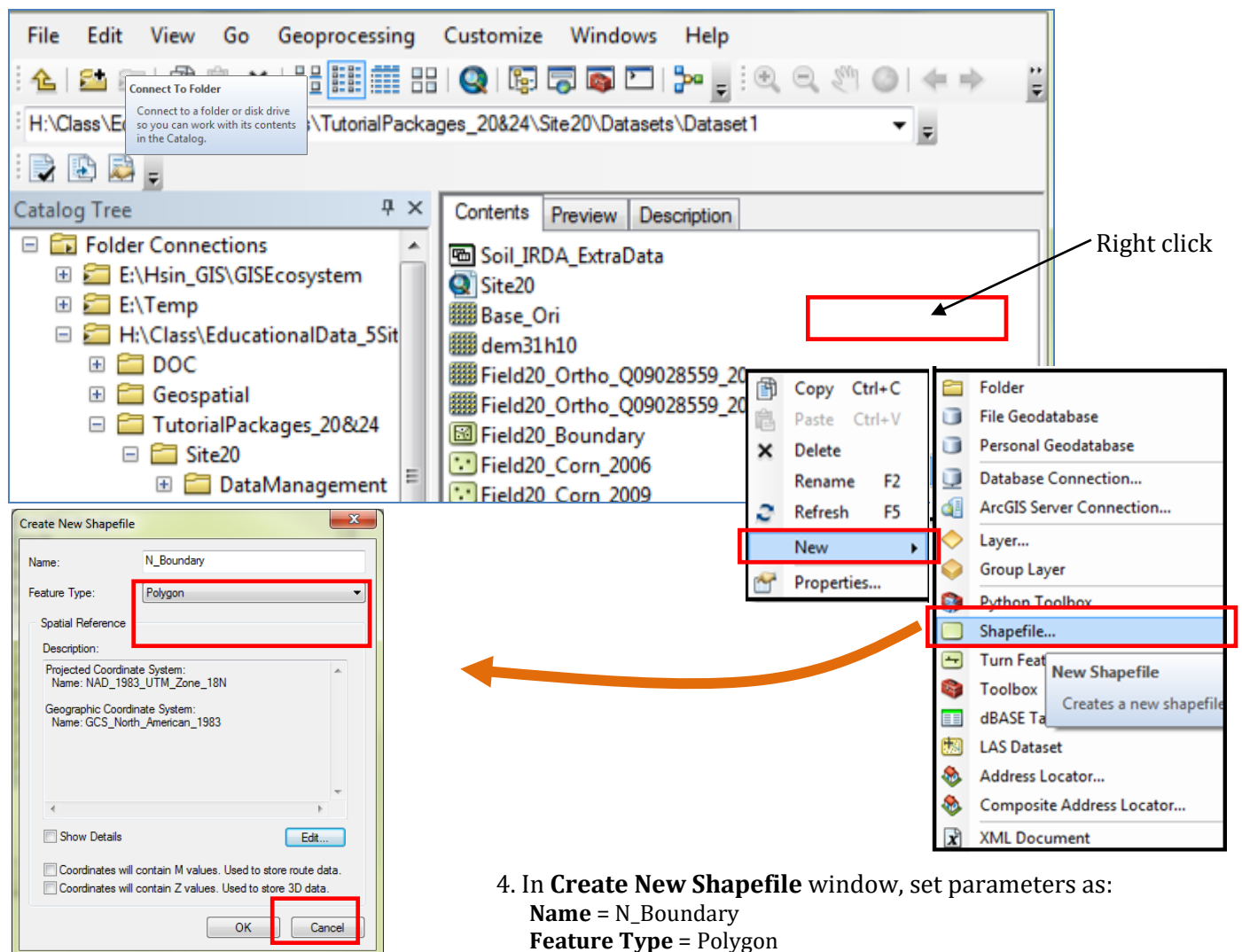
Tutorial Set 1: Working with ArcGIS

Exercise Site20_1-6 Digitizing a new field boundary

Learning objective: Creating any new boundary/polygon by digitizing on the image
Techniques: Editor Tool
Data Source: Dataset1

Part 1: Creating a new shapefile in the ArcCatalog

1. Open **ArcCatalog** and Select **Dataset 1** from **Catalog Tree**
2. Right click in the blank area in **Contents** window, select **New>Shapefile** to add a new shapefile



4. In **Create New Shapefile** window, set parameters as:

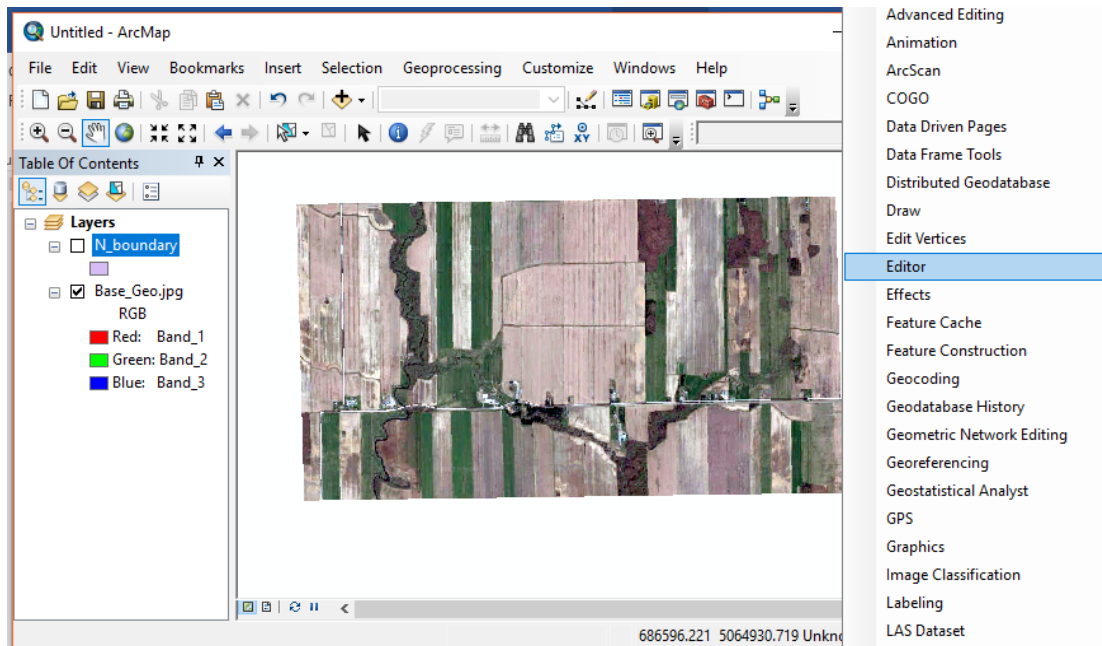
Name = N_Boundary

Feature Type = Polygon

Edit>Spatial Reference Properties>Projected Coordinate System>UTM>NAD 1983> NAD_1983_UTM_Zone_18N

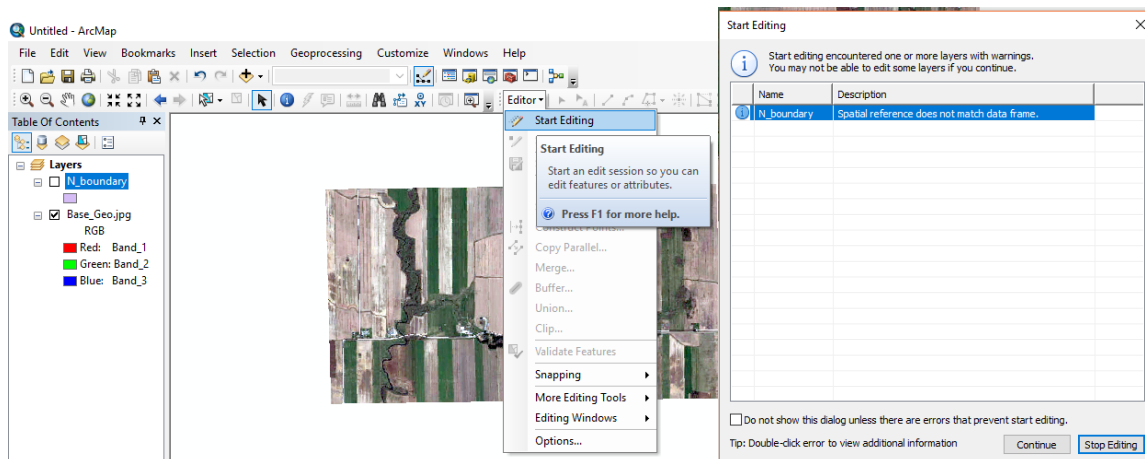
Click OK.

5. Open **ArcMap**, drag and drop **N_Boundary.shp** and **Base_Geo.jpg** into ArcMap from the ArcCatalog.

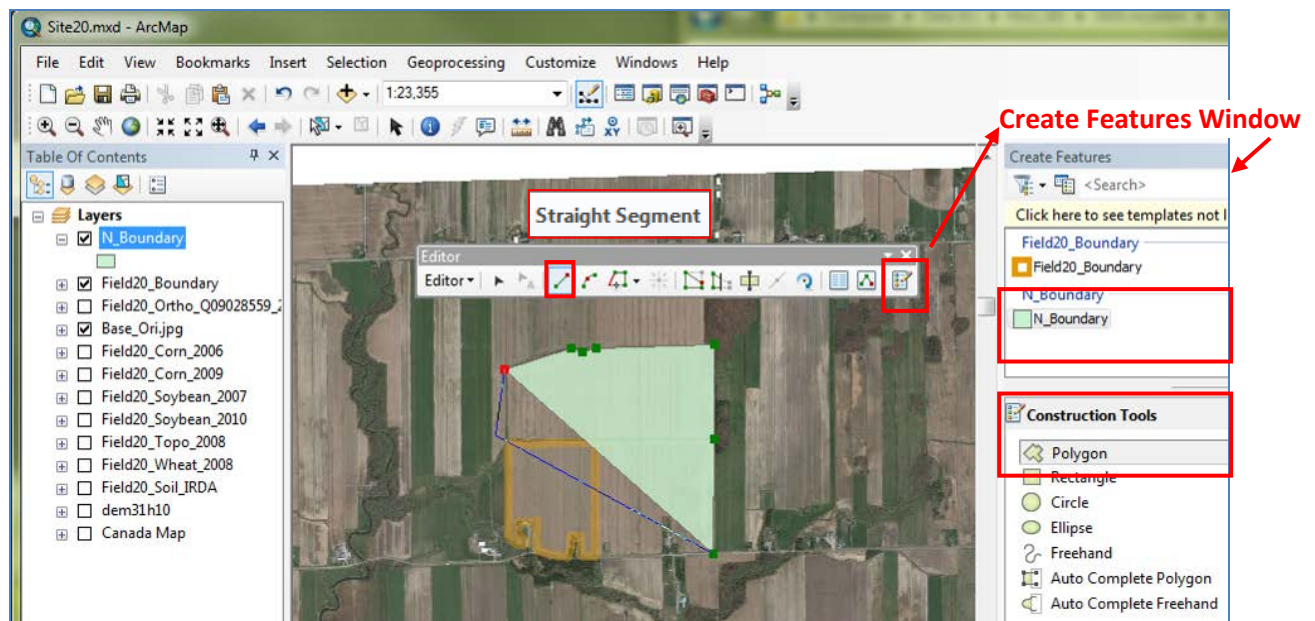


Part 2: Digitizing a new boundary using the **Editor** Tool

1. Add **Editor Tool** to the Tool Bar by right clicking on the Tool Bar. When **Editor** is added to the Tool Bar, go to **Editor > Start Editing**. Choose **N_Boundary** as the target editing layer, and click **Continue**.



2. In **Create Features** window, select **N_Boundary** (see the image below)
 - Select **Construction Tools** and then **Polygon** for drawing a polygon on the image.
 - **Straight Segment** function is automatically activated.
 - Start to digitize the ground features (move the cursor to the View window and click on the image to add multiple vertices following the boundary of a field).
 - Once finish, simply double click at the latest point to finish editing this polygon.
 - Go to **Editor > Save Edits** and **Editor > Stop Editing** to save and close the editing mode.



3. If you need, more advanced editing functions can be found in **Editor Tool** bar. By simply activating the **Editor**, choose the target layer and click on the desired functions, such as **Cut Polygon Tool** (to split), **Editing Vertices** (to adjust shapes). Remember to save any new editing before exiting the editing mode.