

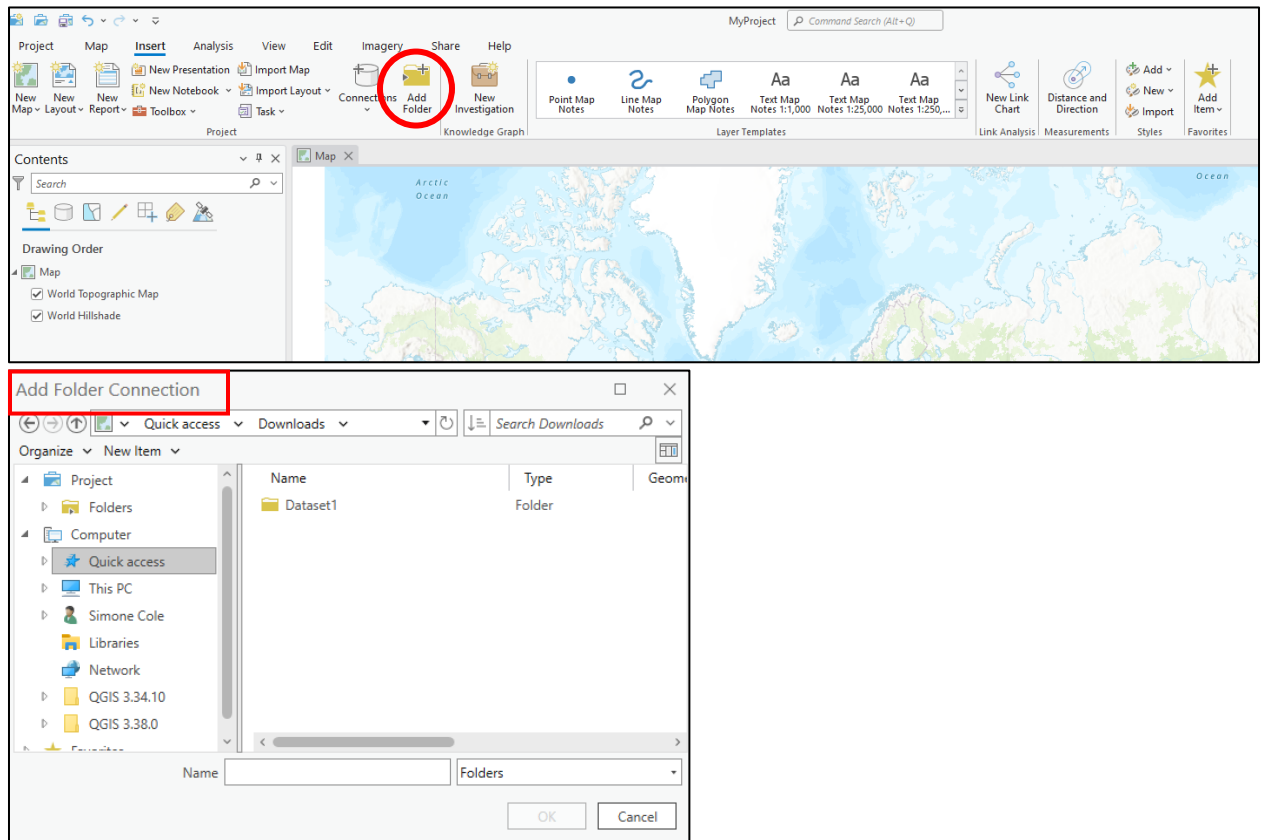
## Lesson 1.1: Displaying Data and Saving Projects

**Data Source:** *dataset1.zip*

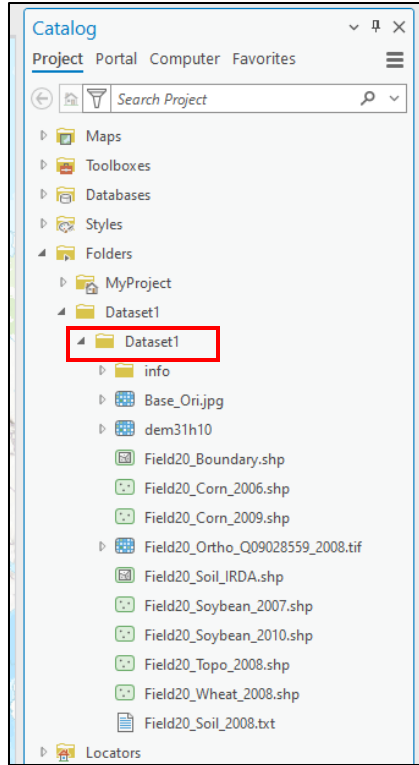
**Part 1:** Download and unzip **dataset1.zip** from <http://adamchukpa.mcgill.ca/arcgis/> onto the local computer or your flash drive.

**Part 2:** Displaying data in ArcGIS Pro.

1. Launch ArcGIS Pro: **Start > Programs > ArcGIS Pro**
2. In ArcGIS Pro click **Add Folder** to launch **Add Folder Connection** window.



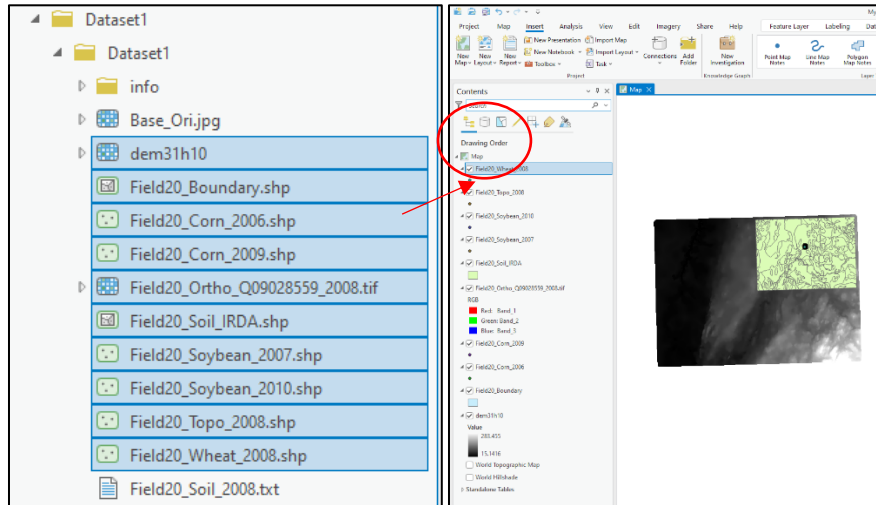
3. In **Add Folder Connection** select **Dataset1** and click **OK** to add to **Folders** in the **Projects** tab of the **Catalog**.



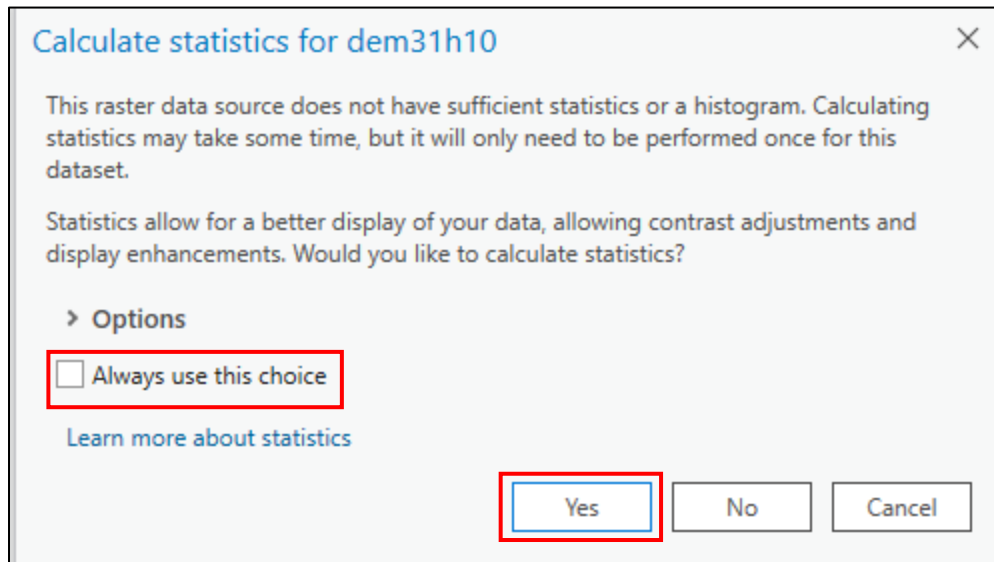
Note: See the table below for details of the dataset:

File Name	Description	Format
<i>Base_Ori.jpg</i>	A GoogleMaps snapshot	*.jpg
<i>dem31h10</i>	Digital elevation model	ArcGIS GRID
<i>Field20_Boundary.shp</i>	Field boundary	ArcGIS shapefile (polygon)
<i>Field20_Corn_2006.shp</i>	Corn yield 2006	ArcGIS shapefile (point)
<i>Field20_Corn_2009.shp</i>	Corn yield 2009	ArcGIS shapefile (point)
<i>Field20_Ortho_Q09028559_2008.tif</i>	MRNF Orthophoto 2008	TIFF
<i>Field20_Soil_2008.txt</i>	2008 Soil analysis data	Text file
<i>Field20_Soil_IRDA.shp</i>	IRDA's soil map	ArcGIS shapefile (polygon)
<i>Field20_Soybean_2007.shp</i>	Soybean yield 2007	ArcGIS shapefile (point)
<i>Field20_Soybean_2010.shp</i>	Soybean yield 2010	ArcGIS shapefile (point)
<i>Field20_Topo_2008.shp</i>	2008 Topographic data	ArcGIS shapefile (point)
<i>Field20_Wheat_2008.shp</i>	Wheat yield 2008	ArcGIS shapefile (point)

- Under the **Dataset1 Folder** select all files except *Field20\_Soil\_2008.txt* and *Base\_Ori.jpg*. Drag the files to the **Contents Tab** under **Drawing Order**.



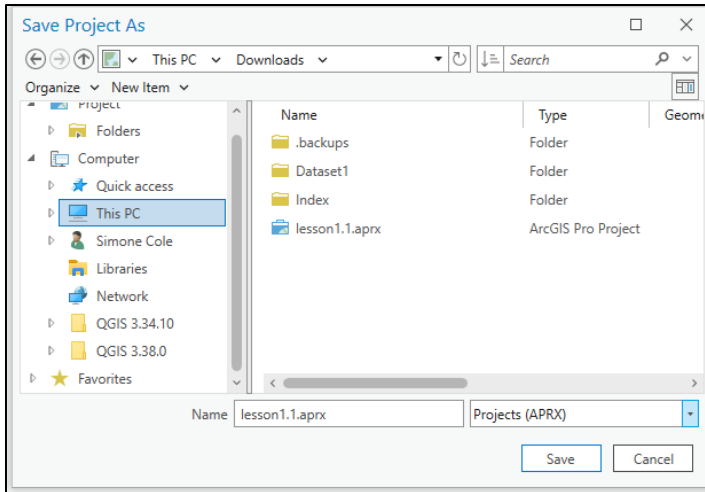
- If you see the below pop-up, select **Always this choice** and **yes**.



### Part 3: Saving an ArcGIS Pro project.

ArcGIS Pro stores work in project folders as .aprx files. This structure allows you to assemble all the resources needed for your work in one place. A project can contain maps, scenes, layouts, data, tasks, toolboxes, and styles, as well as connections to servers and folders. The .aprx file is the ArcGIS Pro project file and is equivalent to an .mxd file.

- Click on **Project > Save Project As**
- Save you project with a logical name for the project and save it to the correct destination on your computer or flash drive. You should save you project and datasets to the same folder.



3. Close ArcGIS Pro.