

Tutorial Set 4: Remote sensing

Exercise Site20_4-1 Multispectral images (Landsat8 OLI)

Learning objective: Downloading Landsat8 OLI multi-spectral images

Techniques: ArcCatalog data management

Data Source: USGS website

Part 1: Downloading Landsat8 OLI images

1. Must [register](#) for a USGS user account (create new account) before downloading the dataset.
2. Go to USGS Global Visualization Viewer (GloVis) site to search for Landsat8 OLI imagery.
3. Once the site is open, Choose Your Dataset (s) > Landsat8 OLI.

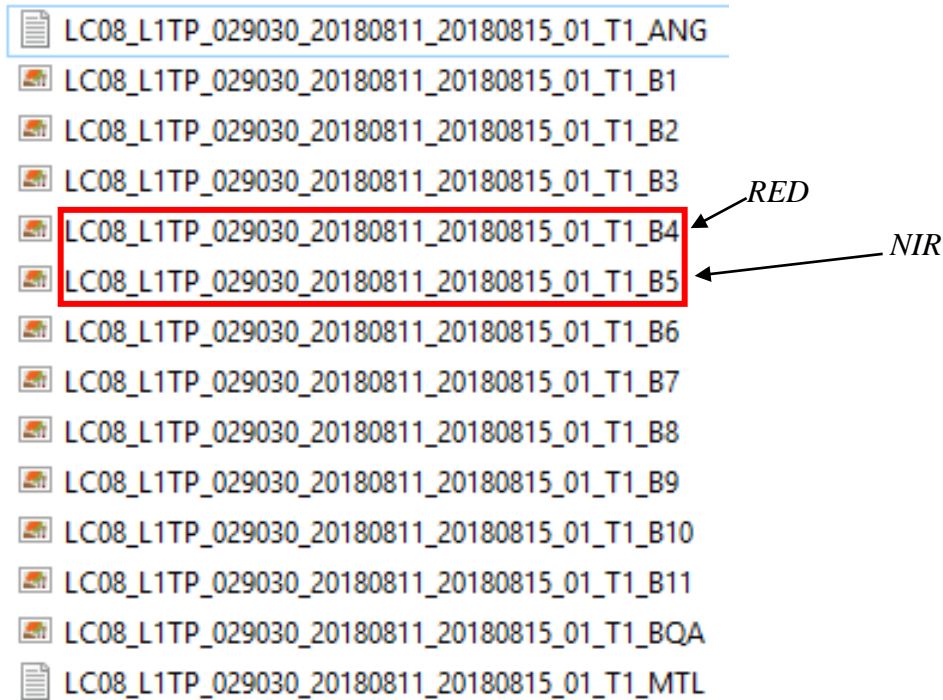
The screenshot displays the USGS GloVis web interface. On the left, the 'Interface Controls' panel is visible, with several elements highlighted by red boxes: the 'Landsat 8 OLI/TIRS C1 Level-1' dataset selection, the 'Date Range' filter set to '06/01/2018' to '06/30/2018', the 'Cloud Cover' filter set to '0' to '10', and the 'View Metadata' and 'Download' buttons. The main map area shows a satellite image of a forested region with a red bounding box. The top right corner shows the 'Current Location' (Lat: 46.7043, Lon: -72.675) and a 'Jump to Location' button. The bottom of the interface includes a timeline view for the year 2018 and a 'Time Scale' dropdown menu.

4. Search **Jump to** on top right, Enter **Lat/Lng = 46, -71.4** and then click **Jump to Location**.
5. Enter date = **June 2018**, and then click **Apply** (cloud cover: 10>).
6. Click **Select** the dataset, and then click **View Metadata** (make sure your required properties).

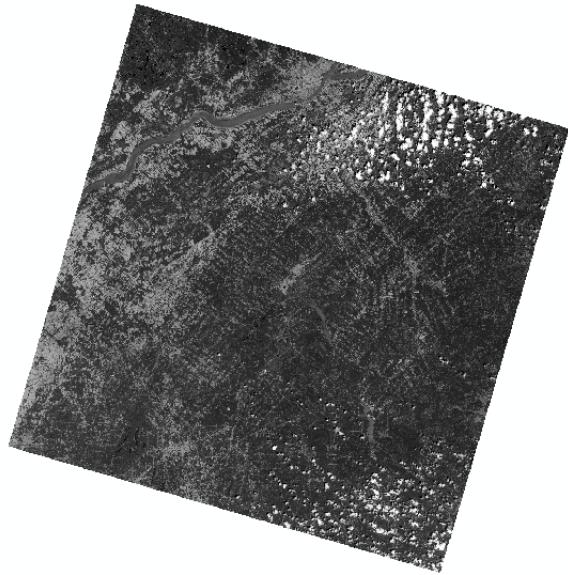
Metadata for LC08_L1TP_012029_20180719_20180731_01_T1	
Field	Value
Landsat Product Identifier	LC08_L1TP_012029_20180719_20180731_01_T1
Landsat Scene Identifier	LC80120292018200LGN00
Acquisition Date	2018/07/19
Collection Category	T1
Collection Number	1
WRS Path	012
WRS Row	029
Target WRS Path	012
Target WRS Row	029
Nadir/Off Nadir	NADIR
Roll Angle	-.001
Date L-1 Generated	2018/07/31
Start Time	2018:200:15:25:14.9529950
Stop Time	2018:200:15:25:46.7229930
Station Identifier	LGN
Day/Night Indicator	DAY
Land Cloud Cover	.74
Scene Cloud Cover	.73

7. Then, click download

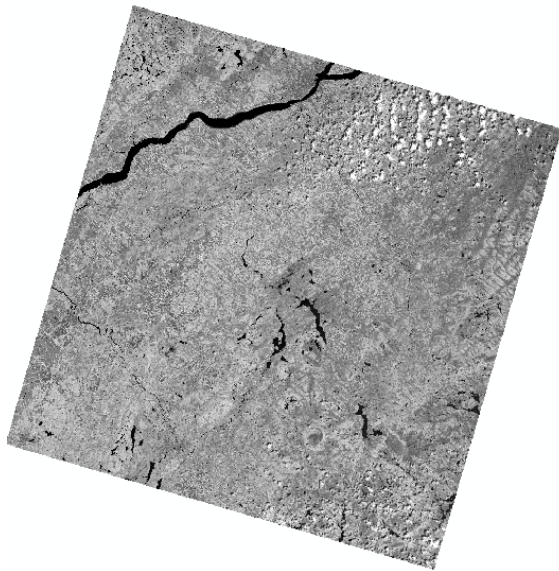
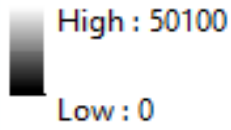
8. The downloaded dataset includes 11 images (.tiff format) and meta data file (MTL.txt):



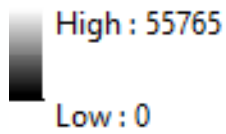
9. Open **ArcCatalog**, and rename **T1_B4.TIF** to **RED.TIF** and **T1_B5.TIF** to **NIR.TIF**.





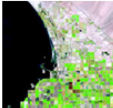
RED.TIF



NIR.TIF



Note: Displayed below are some common band combinations in RGB comparisons of Landsat 5/7/8

		Landsat 7 Landsat 5	Landsat 8
	Color Infrared:	4, 3, 2	5,4,3
	Natural Color:	3, 2, 1	4,3,2
	False Color:	5,4,3	6,5,4